

Bilayer Charge Asymmetry and Oil Residues Destabilize Membranes upon Poration

Fernanda S. C. Leomil,[§] Mareike Stephan,[§] Shreya Pramanik, Karin A. Riske,^{*} and Rumiana Dimova^{*}



Cite This: *Langmuir* 2024, 40, 4719–4731



Read Online

ACCESS |



Metrics & More

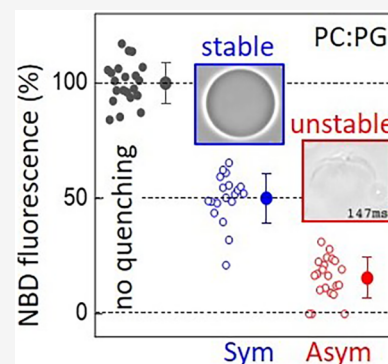


Article Recommendations



Supporting Information

ABSTRACT: Transmembrane asymmetry is ubiquitous in cells, particularly with respect to lipids, where charged lipids are mainly restricted to one monolayer. We investigate the influence of anionic lipid asymmetry on the stability of giant unilamellar vesicles (GUVs), minimal plasma membrane models. To quantify asymmetry, we apply the fluorescence quenching assay, which is often difficult to reproduce, and caution in handling the quencher is generally underestimated. We first optimize this assay and then apply it to GUVs prepared with the inverted emulsion transfer protocol by using increasing fractions of anionic lipids restricted to one leaflet. This protocol is found to produce highly asymmetric bilayers but with ~20% interleaflet mixing. To probe the stability of asymmetric versus symmetric membranes, we expose the GUVs to porating electric pulses and monitor the fraction of destabilized vesicles. The pulses open macropores, and the GUVs either completely recover or exhibit leakage or bursting/collapse. Residual oil destabilizes porated membranes, and destabilization is even more pronounced in asymmetrically charged membranes. This is corroborated by the measured pore edge tension, which is also found to decrease with increasing charge asymmetry. Using GUVs with imposed transmembrane pH asymmetry, we confirm that poration-triggered destabilization does not depend on the approach used to generate membrane asymmetry.



INTRODUCTION

A typical eukaryotic cell membrane is highly asymmetric in the distribution of its main constituents, which is essential to ensure distinct functions of cells. The asymmetry is comprehensive with respect to membrane proteins and carbohydrates: integral proteins exhibit always the same orientation, peripheral proteins are only found associated with one of the leaflets, and carbohydrates attached to proteins and lipids only face the external medium, where they are crucial to cell signaling. Importantly, the lipid bilayer composition is also highly asymmetric.¹ Specifically in mammalian membranes, phosphatidylcholine and sphingomyelin are found in abundance in the outer monolayer, while phosphatidylethanolamine and anionic lipids, such as phosphatidylserine and phosphatidylinositol, are most commonly found in the inner leaflet, giving rise to a charge asymmetry across the membrane.^{2,3} Lipid asymmetry affects many membrane properties, such as curvature, shape, permeability, and stability of cell membranes. The loss of this asymmetry implies crucial physiological consequences,^{4–7} as for instance the apoptotic cascade followed by the externalization of phosphatidylserine.^{8,9} Therefore, healthy cells devote substantial effort and energy to sustain membrane asymmetry. This is achieved mainly by the work of flippases and floppases, which are enzymes that transport lipids from one leaflet to the other in order to keep the desired lipid asymmetry,^{10,11} but also via protein-free processes¹² (more relevant for model membranes). Reversible lipid asymmetry is now also being

recognized as a factor influencing intracellular signaling and intercellular communication.¹³ These efforts highlight the importance of asymmetry and merit in being thoroughly investigated.

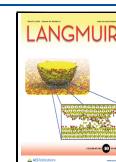
Membrane stability is of essential importance to cell viability as the first collective property of the plasma membrane is to act as a boundary to the cell, regulating the traffic of substances. The integrity of the cell membrane relies mainly on the material properties of the constituting lipid bilayer, which due to the hydrophobic effect forms a cohesive and robust film that is nonetheless soft and able to bend. These properties are sensitive to the lipid composition and are affected by the asymmetric distribution of lipids,¹ an effect that can be further enhanced when charge asymmetry is present. Even though membranes are stable, they can rupture through the opening of a pore, for example, in response to mechanical stress. Poration can lead to cell death in the case that a quick resealing of the pore fails.^{14,15} Pores in cell membranes can also be created on purpose, with the application of a high-intensity electric pulse,¹⁶ as in clinical procedures, favoring the entrance of

Received: November 5, 2023

Revised: January 3, 2024

Accepted: January 5, 2024

Published: February 19, 2024



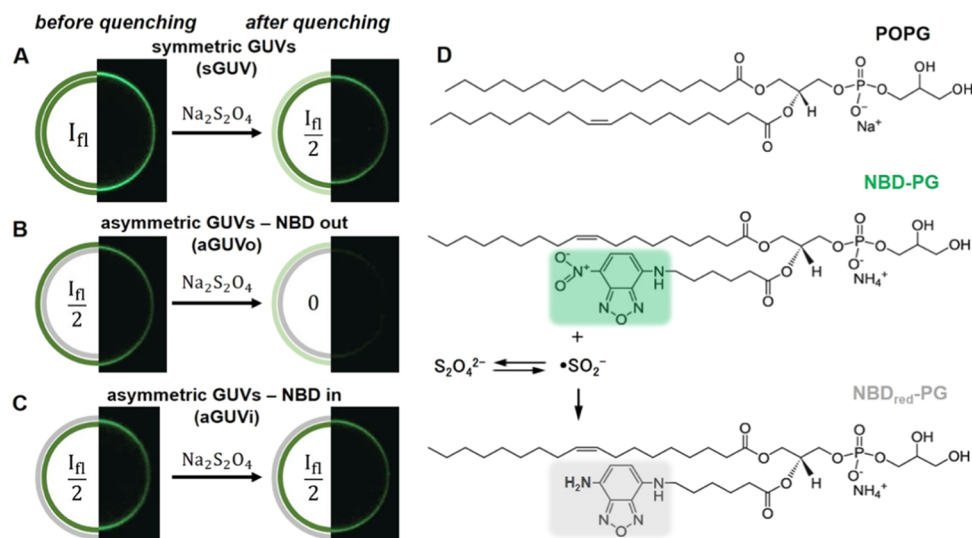


Figure 1. Principle of the quenching assay for evaluating membrane asymmetry in GUVs and chemical structures of molecules. (A–C) The cartoons and example confocal cross sections of GUV halves illustrate how the vesicle fluorescence intensity, I_{fl} , should change upon external addition of sodium dithionite when the distribution of the quenched fluorophore in the initial GUV is (A) symmetric (sGUVs) or (B, C) asymmetric with the fluorescent lipid located at the outer or inner leaflet (aGUVo or aGUVi, respectively). The vesicles in the shown confocal cross sections had diameters between 20 and 40 μm . (D) Chemical structures of the anionic lipid POPG, its fluorescence analogue NBD-PG, and the effect of sodium dithionite on the fluorescent group. In solution, the dithionite ion $S_2O_4^{2-}$ is in equilibrium with the $\cdot SO_2^-$ radical, which reduces the nitro group of NBD to its corresponding amine. The reduced NBD-PG (NBD_{red}-PG) is nonfluorescent.

different molecules into cells for which the membrane is generally impermeable.¹⁷ Due to its efficiency, this method (named electroporation or electroporabilization) has become a common approach in the treatment of various types of cancer.^{18–22} Additionally, it is being used for gene therapy^{23,24} and to encapsulate or promote cargo release in drug delivery systems.²⁵

Model membranes have emerged as a useful tool to allow a better understanding of physiological phenomena involving cell membranes. Being composed of a minimal set of components, they represent a simplified version of complex biomembranes and are less susceptible to possible interferences from different processes. They also offer the benefit of allowing for independent changes of a single parameter at a time. In particular, giant unilamellar vesicles (GUVs)²⁶ stand out as an ideal system since they replicate the plasma membrane in terms of size (10–100 μm) and curvature and are large enough to be observed and manipulated under an optical microscope. GUVs internal and external aqueous solutions are often chosen as sucrose and glucose, respectively. In these settings, when observed under phase contrast microscopy, the refractive indices of the two sugar solutions create a contrast across the vesicle membrane making the GUVs interface appear as a dark contour with a bright halo around. Furthermore, any discontinuity in the membrane (such as the one caused by the opening of a micron-sized pore) can be easily visualized.²⁷ The response of GUVs to electric pulses has been studied in detail, revealing interesting relaxation properties of lipid bilayers,^{27,28} including pore opening and closing dynamics.^{29–31} It was shown that while electric pulses applied to zwitterionic GUVs composed of POPC (palmitoyl oleoylphosphatidylcholine) caused the opening of transient macropores that lasted about 50 ms, GUVs containing the anionic lipid POPG (palmitoyl oleoylphosphatidylglycerol) could be completely disrupted and collapse after the pulse.³² The presence of POPG and

other anionic lipids and molecules was shown to render the membrane more susceptible to the electric pulses, giving rise to leaky membranes or to complete vesicle collapse (bursting).^{33–35} A fundamental membrane material property that characterizes the stability of pores formed in a membrane is the pore edge tension (γ), which reflects the energy cost of maintaining an open pore in the membrane,³⁶ and is crucial for plasma membrane repair processes. If the cost to rearrange the lipids in the pore rim is too low, as in the case of unstable membranes, the vesicle will burst due to continuous opening of the pore, associated with low edge tension values. The pore edge tension can be measured from the dynamics of macropore closure.^{29,34,36} Earlier data have shown a 2-fold reduction for membranes containing 50 mol % charged lipids^{32–34} compared to neutral membranes. Interestingly, the increased destabilization was not observed to depend on the means of poration approach (electric pulse or use of detergent) and on the specific anionic lipid, but rather on the surface charge density in the membrane.³³

The above-mentioned studies were performed with symmetric lipid bilayers of giant vesicles prepared mainly by the conventional electroformation method.³⁷ Lately, several methods have been developed to allow for the preparation of asymmetric membranes to mimic cell membrane asymmetry. Some of them are based on cyclodextrin-mediated lipid exchange,^{38–40} others (and more abundantly applied to the preparation of GUVs) are based on phase-transfer methods (also known as droplet transfer or emulsion transfer)^{41–44} assisted by pipettes/microfluidics^{45–47} or employing double-emulsion templates;⁴⁸ lipid exchange mediated by hemifusion to a supported bilayer has also been applied.^{49,50} However, it is of the utmost importance to validate the preparation method by probing the actual membrane asymmetry of the generated vesicles. Different methodologies have been reported so far, including nuclear magnetic resonance (NMR) analysis,^{51–54} neutron reflectometry,⁵⁵ small-angle neutron scattering,⁵⁶ and

copper-free click chemistry between outer leaflet lipids and fluorophores.⁵⁷ Monitoring the formation of inward or outward nanotubes upon vesicle deflation also offers a way to infer the presence of asymmetry.^{58–61} While NMR and click-chemistry-based techniques are not feasible in every laboratory setup and/or cannot be applied to giant vesicles, spontaneous tubulation offers an easy and straightforward visualization. However, this is not a very quantitative approach, as tubulation in vesicles is not amenable to precise characterization and can vary from vesicle to vesicle because of the different area-to-volume values.

An alternative technique is the fluorescence quenching assay, first described in 1991 by McIntyre and Sleight as an assay to determine asymmetric fluorophore distributions in small unilamellar vesicles.⁶² Since this first report, the quenching assay has been ubiquitously applied to access membrane asymmetry in small, large, and giant unilamellar vesicles (SUVs, LUVs, and GUVs, respectively) or even in living cells, see, e.g., refs 49,59,62–64. The assay is based on the reduction of NBD (nitrobenzoxadiazol)-labeled lipids by dithionite ions, causing irreversible inactivation (quenching) of the fluorophore, Figure 1. The majority of the studies employing the quenching assay are performed on suspensions of SUVs or LUVs, where the lipid concentration is in the millimolar range, while in GUV suspensions, it is orders of magnitude lower and roughly in the micromolar range. This mismatch implies that protocols across systems cannot be applied without adjustment, for example, to match the quencher-to-lipid ratios. Indeed, verbal exchange with researchers in other groups has suggested that this assay when applied to GUVs is not easy to reproduce from lab to lab and between users, presumably due to different initial conditions such as lipid concentrations and buffers. This is why, here, we thoroughly explored and identified conditions that must be ensured for a functional and reproducible quenching assay.

Using the optimized assay, we investigated the influence of charge asymmetry in GUVs subjected to electroporation. Asymmetric GUVs composed of POPC with increasing molar fractions of POPG restricted to one of the leaflets are prepared using the inverted emulsion technique. The success of the preparation method and the degree of asymmetry achieved are verified using the quenching of NBD-labeled PG lipid by sodium dithionite. We then interrogate the stability of asymmetric GUVs compared to symmetric ones by quantifying the fraction of destabilized vesicles upon electroporation and by measuring the pore edge tension, which governs pore closure. We show that membrane destabilization can be much more pronounced if charge asymmetry, as in the case of real cells, is present. Moreover, we raise concerns about possible oil contamination in the membranes of GUVs prepared via the inverted emulsion technique. Finally, an alternative preparation method for asymmetric GUVs, based on pH asymmetry, is put forward to demonstrate that charge asymmetry is the main source of membrane destabilization.

MATERIALS AND METHODS

Materials. The lipids 1-palmitoyl-2-oleoyl-*sn*-glycero-3-phosphocholine (POPC), 1-palmitoyl-2-oleoyl-*sn*-glycero-3-phospho-(1'-rac-glycerol) (sodium salt) (POPG), and (1-oleoyl-2-{6-[(7-nitro-2-1,3-benzoxadiazol-4-yl)amino]hexanoyl}-*sn*-glycero-3-[phospho-rac-(1-glycerol)]) (ammonium salt) (NBD-PG) were purchased from Avanti Polar Lipids (Alabaster, AL). Glucose, sucrose, NaCl, EDTA, TrisHCl (Trizma hydrochloride), and sodium dithionite were purchased from

Sigma-Aldrich (St. Louis, MO). Lipids and dye were dissolved in chloroform, and the stock solutions were stored at -20°C until use. Alexa 647 hydrazide was purchased from Thermo Fisher (Germany). Light mineral oil was purchased from Carl Roth (Karlsruhe, Germany).

Vesicle Preparation via Electroformation. For the optimization of the quenching assay, symmetric GUVs were prepared by the electroformation method.⁶⁵ Briefly, a lipid mixture (6 μL , 2 mM) dissolved in chloroform was spread on the surfaces of two conductive glasses (coated with indium tin oxide), which, after being dried under a stream of nitrogen, were sandwiched with a Teflon spacer (2 mm thick) forming a chamber ($\sim 2\text{ mL}$ volume). This chamber was filled with sucrose solution (0.2 M) and connected to a function generator. An AC field (1.6 Vpp, 10 Hz) was applied for 30 min to accelerate the growth of the GUVs. The vesicles were then harvested and diluted in an isotonic glucose solution. The osmolarity was adjusted with an osmometer (Osmomat 3000, Gonotec GmbH, Germany).

Vesicle Preparation via Inverted Emulsion Technique. The protocol for the preparation of GUVs via the inverted emulsion technique was adapted from previous work on the method.^{43,66} Briefly, the first step consisted of preparing the lipid-in-oil solutions that were used to create the individual monolayers. The lipid mixture for each monolayer was prepared in a glass vial, and the chloroform was removed under a stream of nitrogen followed by further evaporation in vacuum for 1 h. Mineral oil was added to each vial to give an 800 and 400 μM solution for the outer and inner leaflets, respectively. Lipids were dissolved in the oil by sonication for 2 h. For the preparation of the outer monolayer, 250 μL of glucose (0.18 or 0.58 M, depending on the experiment) were added to a 1.5 mL protein LoBind tube (Eppendorf, Germany), followed by the addition of 250 μL of lipid-in-oil for the outer leaflet (800 μM), creating a water–oil column. This column was left to stabilize for 2 h. The next step, after the 2 h column incubation, consisted in preparing the emulsion of aqueous droplets in oil phase containing the lipids for the inner monolayer. Lipid in oil for the inner leaflet (150 μL , 400 μM) was placed in a separate 1.5 mL tube, followed by the addition of sucrose (4 μL , 0.2 or 0.6 M, slightly higher osmolarity than the glucose solution). A water-in-oil emulsion was produced by mechanical agitation, dragging the tube 4 times over a tube rack (polypropylene, 96 positions). The emulsion was then carefully pipetted and deposited on the top of the water–oil column, followed by centrifugation (130g, 10 min). After centrifugation, the residual oil on the top of the glucose solution was removed, without extreme perturbation to the interface, and the vesicles were harvested.

Imaging of GUVs Using Optical and Confocal Microscopy.

Different modes of observation were employed. Electroporation experiments for pore edge tension calculation were performed on a Zeiss Axiovert 135 TV (Jena, Germany) phase contrast inverted microscope equipped with an ultrafast camera Phantom V2512 (up to 25,000 frames per second) or alternatively with an Axio Observer D1 (Jena, Germany) equipped with an sCMOS camera (pco.edge, PCO AG, Kelheim, Germany), for the quantification of GUV response to DC pulse and posterior calculation of the fraction of destabilized vesicles. In both cases, a 20 \times (NA 0.4) air objective was used. Fluorescence measurements were performed on a Leica confocal SP5 setup (Mannheim, Germany) through a 40 \times (0.75 NA) air objective. NBD-PG was excited using the 488 nm line of an argon laser and collected in the 500–600 nm range. The Alexa 647 fluorophore was excited using a 638 HeNe laser, and the signal was collected between 650 and 750 nm.

Python Code for Measuring Membrane Fluorescence Intensity. The algorithm is provided in the form of Jupyter notebooks, which are files that can be run in a browser. The inputs are “.lif” files, which are the standard file format for Leica confocal microscopes. First, a Gaussian Filter (kernel size of one pixel) was applied to the images to remove noise. To obtain an estimate of the membrane fluorophore concentration, four lines were drawn across the membrane (vertical and horizontal and passing through the GUV center); this approach eliminates contributions from polarization artifacts) to generate four intensity profiles. The integrated area below

these intensity profiles is proportional to the fluorophore concentration in the membrane, and the mean value of these four measurements was used as mean fluorescence intensity. The code can be found in the GitHub depository: <https://github.com/fernandaleomil/fluorescenciaguvs>.

Membrane Asymmetry Revealed via Leaflet Specific Fluorophore Quench. To assess the asymmetric distribution of POPG in the membrane, the dithionite quenching assay was employed targeting NBD-PG. In the first step, the membrane signal of not quenched GUVs was measured by confocal microscopy imaging at the equatorial plane and image analysis using a custom-written python code (see previous section). In the next step, the membrane signal of GUVs from a quenched sample was measured and normalized by the mean value obtained on GUVs from the nonquenched control sample. At least 20 GUVs were considered for each sample; the scatter in the data results from imaging vesicles of different sizes (corresponding to different depths in the sample) and inhomogeneity during mixing. The basic procedure of the NBD fluorophore quenching is described in the following (the details for optimizing this protocol are described in the [Results and Discussion](#) section on optimization of the quenching assay): freshly prepared sodium dithionite solution (100 mM in 1 M Tris HCl pH 10) was added to a premixed GUV-in-sucrose solution (17.5 μ L) and 0.18 M glucose solution (the volume was adjusted to the volume of added dithionite to obtain a final volume of 100 μ L) to final sodium dithionite concentrations of 0.5, 1, 1.5, 2, 2.5, or 10 mM. After a certain incubation time (1, 5, 10, or 15 min) the sample was diluted 5-fold with 0.18 M glucose (400 μ L), in order to reduce the concentration of sodium dithionite. 100 μ L of the sample was used for observation. To optimize the protocol, different sodium dithionite concentrations and incubation times were tested.

Electroporation Experiments. GUVs prepared in sucrose were diluted \sim 10-fold in glucose solution (at the same solution osmolarity used for GUV preparation) containing the appropriate additive (NaCl and/or EDTA) and placed in an electroporation chamber (Eppendorf, Hamburg, Germany). The chamber consists of two parallel cylindrical platinum electrodes (92 μ m in radius) and 500 μ m apart (gap distance).²⁷ The chamber was connected to a Multiporator (Eppendorf) for DC electric pulse application (3 kV/cm, 150 μ s). Experiments to quantify the number of GUVs that underwent bursting or contrast loss (relative to all vesicles in the field; see also [Figure S3](#)) after the DC pulse were performed in glucose (0.58 M) and, if not otherwise indicated, without any additive. Image sequences were typically acquired at 1760 px \times 2160 px, with an acquisition rate of 10 frames per second, for 5 min. Pore edge tension experiments were performed on vesicles grown in the presence of NaCl (0.18 M sucrose and 0.5 mM NaCl) and diluted in glucose to induce oblate deformation during the pulse. Image sequences were typically acquired at 512 px \times 512 px with acquisition rates between 3000 and 20,000 frames per second. Pore dynamics was assessed with the software PoET,³⁴ where for the viscosity of the outer solution (η), we used 1.133×10^{-3} Pa·s. The procedures for assessing the number of destabilized vesicles and for measuring the edge tension were repeated several times for each composition, every time on a fresh sample.

Microfluidic Exchange of External GUV Solution for Probing Membrane Asymmetry at Asymmetric pH. Chip fabrication: The microfluidic device⁶⁷ was prepared using PDMS and glass coverslips. The PDMS and the curing gel were mixed thoroughly in a ratio of 10:1 before degassing in a vacuum chamber. This mixture was poured over the wafer with a microfluidic design cast and baked at 90 $^{\circ}$ C for 3 h. After cooling, the PDMS was peeled from the wafer, and the devices were separated using a sharp blade. To form the inlet and outlet of the device, holes were punched using a biopsy punch with a plunger system (Kai Medical). The PDMS device and glass coverslips were treated with plasma (Harrick Plasma) for 1 min and pressed together. The whole setup was placed on a hot plate at 80 $^{\circ}$ C for 30 min.

Experiments on the GUVs were conducted as follows. GUVs with the composition POPC/POPG (8:2) doped with 1 mol % NBD-PG were electroformed in sucrose solution. These were diluted in an

isotonic glucose solution and loaded onto the microfluidic device. The device contained dead-end side channels, in which the GUVs were loaded using a protocol described in detail previously.⁶⁷ Briefly, the GUVs were drawn from the reservoir using a syringe pump (Nemesys). The device was oriented vertically to settle the GUVs in the side channels. To exchange the solution outside the GUVs after placing it under the microscope, the reservoir was filled with the new solution and the syringe pump drew out the solution at the rate of 200 μ L per hour.

RESULTS AND DISCUSSION

Asymmetric GUVs made of POPC and increasing fractions of POPG restricted to one of the leaflets were prepared by the inverted emulsion protocol.⁴³ The efficiency of the method in generating asymmetric GUVs was quantified using the assay based on NBD quenching with sodium dithionite. In the following, we first describe the principle of the method and its application to symmetric and asymmetric vesicles ([Figure 1](#)). Next, the method is optimized, which is crucial for valid probing of the degree of asymmetry of the obtained GUVs. Then, the stability of the asymmetric GUVs was assessed by the application of DC pulses and quantification of destabilization effects and pore edge tension. Finally, asymmetry in the vesicle bilayer was achieved by exposing the GUV membrane to different pH conditions inside and outside.

Principle of the Quenching Assay. The quenching assay is based on the irreversible reduction of the nitro group of the fluorescent probe NBD by the radical SO_2^- (in equilibrium with the dithionite ion $\text{S}_2\text{O}_4^{2-}$) to its corresponding amine, which is nonfluorescent,⁶² see [Figure 1D](#). The fluorescence signal can be quantitatively assessed from confocal microscopy cross sections of GUVs ([Figure 1A–C](#)), see also the [Materials and Methods](#) sections on GUV imaging and fluorescence intensity analysis for details on the image acquisition and processing. For the optimization of the quenching protocol, POPC GUVs with a symmetric distribution of 1 mol % NBD-PG (a PG lipid labeled with NBD in one of the hydrophobic tails, see [Figure 1D](#)) were prepared by the conventional electroformation method. Due to the structural and charge similarities, it is expected that NBD-PG similarly distributes across the membrane in a similar manner to POPG and can be treated as its fluorescent representative. Since the NBD group has a relatively high polarity, it is plausible that the lipid tail kinks, allowing sodium dithionite to access the NBD fluorophore. Because the membrane is ideally impermeable to sodium dithionite, quenching is expected to affect only fluorophores exposed at the outer membrane leaflet. Therefore, a reduction of 50% in the fluorescence intensity of the membrane is expected due to the symmetric fluorophore distribution, see [Figure 1A](#). For asymmetric vesicles with NBD-PG located only on the outer leaflet (aGUVo), the fluorescence signal should be completely quenched ([Figure 1B](#)), while for vesicles with NBD-PG located on the inner leaflet (aGUVi), no change is expected ([Figure 1C](#)). The assay requires precaution, since sodium dithionite is a strong reducing agent and unstable in aqueous solutions.⁶⁸ Depending on concentration, pH, and oxygen access, dithionite shows different reactions.⁶⁹ Consequently, the optimization of substance handling and reaction conditions is crucial.

Optimization of the Quenching Assay. The first concern is to define the best conditions for the preparation of a sodium dithionite stock solution. In aqueous environment and in aerobic conditions, sodium dithionite ($\text{Na}_2\text{S}_2\text{O}_4$) is oxidized to hydrogen sulfide (NaHSO_3) and hydrogen sulfate

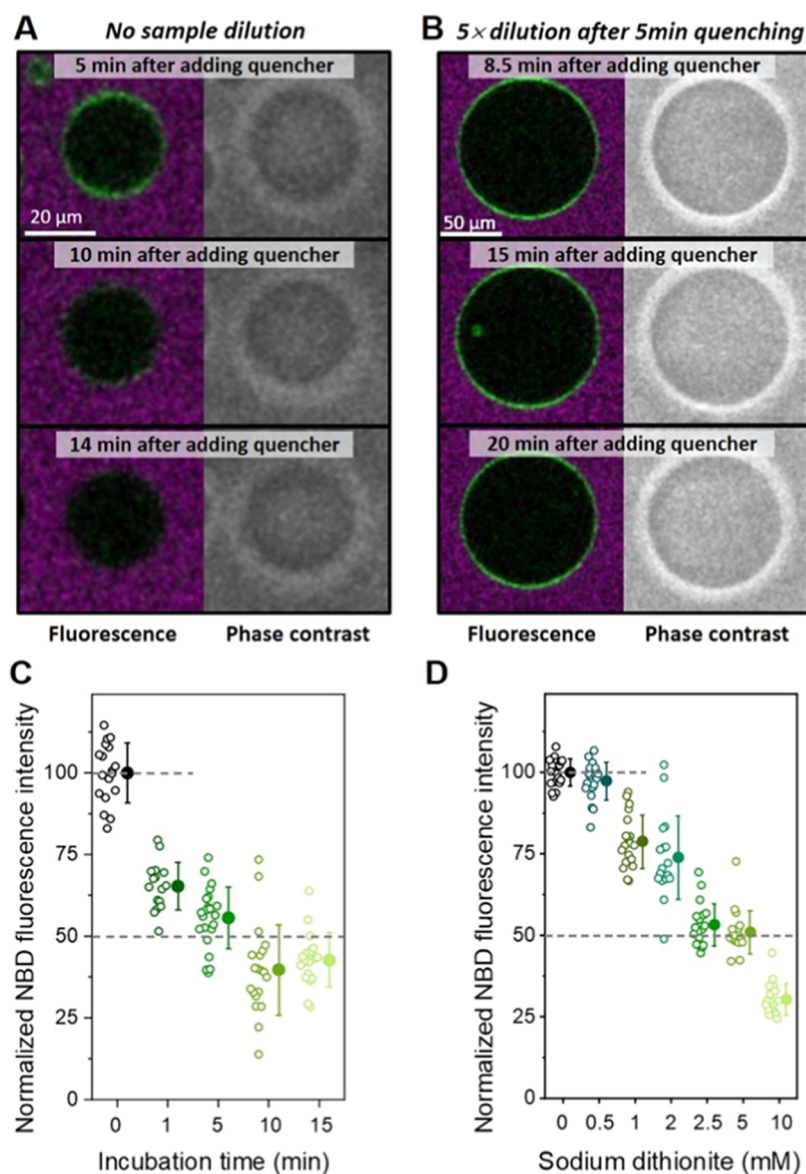


Figure 2. Effect of sample dilution, incubation time, and sodium dithionite concentration on the quenching of the NBD fluorescence in GUVs. (A, B) Confocal and phase contrast image sequences of two symmetric GUVs composed of POPC with 1 mol % NBD-PG (green) prepared with sucrose and then dispersed in glucose medium containing 10 μM water-soluble fluorescent dye Alexa 647 (purple). The quenching agent was added to a final concentration of 2.5 mM $\text{Na}_2\text{S}_2\text{O}_4$, and 5 min after incubation, the sample was either directly transferred to the observation chamber (A) or 5-fold diluted in glucose and then transferred for observation (B). Both GUVs remain impermeable to the dye Alexa 647 and sucrose/glucose (optical contrast is maintained), but dithionite ions are able to quench NBD in both leaflets after 14 min in the absence of a dilution step (A). The dilution step restricts quenching to the outer leaflet only (B). (C) Normalized fluorescence intensities before (not quenched, indicated as 0 incubation time) and after quenching with 2.5 mM $\text{Na}_2\text{S}_2\text{O}_4$ for different incubation times followed by 5-fold dilution. (D) Normalized fluorescence intensities before (0) and after quenching of different sodium dithionite concentrations for 5 min incubation time followed by 5-fold dilution. Each open symbol represents measurements on one vesicle, and mean values with standard deviation are shown as solid symbols on the right. Typically, between 15 and 20 vesicles were measured per sample. The dashed lines are a guide to the eye and indicate not quenched and half of that mean value. Each condition was tested with multiple quenching experiments ($n \geq 3$). Note that the x -axis in (C) and (D) are not linear (see Figure S1 for a data presentation with a linear x -axis) and that the data are slightly shifted to display individual data points and mean values with SD.

(NaHSO_4) causing a decrease of the solution pH,⁷⁰ which then accelerates further dithionite auto-oxidation. Additional to increased acidity, high dithionite concentration accelerates the decomposition of the dithionite ions.⁶⁸ Therefore, the dithionite stock concentration was kept at maximum 0.1 M and not 1 M as described in other publications.^{49,59,62} Highly concentrated 1 M sodium dithionite solutions showed a yellow color and a strong sulfuric smell, indicating the formation of

sulfur dioxide and sulfur. Stock solution concentrations lower than 0.1 M were also avoided to ensure that the volume of the dithionite solution added to the GUV sample is sufficient but small, preventing excessive vesicle dilution. The 0.1 M sodium dithionite solution was always freshly prepared and immediately used.

Previous reports show that alkaline pH solutions stabilize the dithionite ion.^{62,68,69} Therefore, we prepared a 0.1 M sodium

dithionite stock solution in 1 M Tris HCl buffer at pH 10. Upon dilution into the vesicle suspension, the solution reached neutral pH. In fact, when the 0.1 M sodium dithionite stock solution was prepared in nonbuffered 0.18 M glucose (neutral pH), which is the external solution of the GUVs, the pH of the vesicle solution dropped to 2. [Figure S1](#) shows the importance of preparing the sodium dithionite stock solution at high pH. Although the addition of the nonbuffered sodium dithionite solution to a GUV sample resulted in permeabilized and defective GUVs and lipid aggregates ([Figure S1A](#)), GUVs were preserved when the 0.1 M sodium dithionite stock solution was prepared at pH 10. Efficient quenching with a buffered high pH stock solution is exemplified in [Figure S1B](#).

Other important parameters for the quenching assay are the working concentration of sodium dithionite and the incubation time. Note that different concentrations and incubation times have been implemented in the literature (most often using a 10 mM final concentration prepared from 1 M stock solutions, which, as indicated above, results in vesicle decomposition). Presumably, an additional adjustment of the dithionite concentration is required in the individual working conditions, especially if very different total lipid concentrations are explored. It should be stressed, for instance, that lipid, and therefore NBD, concentrations in GUV experiments are usually orders of magnitude lower than typical lipid concentrations of LUV/SUV suspensions, for which the quenching assay was originally developed. Here, starting with the stock solution of 0.1 M Na₂S₂O₄ in 1 M Tris HCl pH 10, we tested different final working concentrations (from 0.5 to 10 mM Na₂S₂O₄) and incubation times (from 1 to 15 min). The desired sodium dithionite concentration was added to the test tube containing the GUVs and after a specific incubation time, the suspension was further diluted 5-fold in order to decrease substantially the quencher concentration, reduce quenching rate, stop unwanted sample degradation, and allow for observation and image acquisition (see [Figure 2A](#) that demonstrates the effect of quenching the fluorescence signal in both leaflets if the dilution step is not implemented). The results from exploring different incubation times (while implementing the 5-fold dilution step afterward) are shown in [Figure 2B,C](#). While incubation of 1 min was not sufficient to inactivate all fluorophores at the outer leaflet, incubation for 5 min led to quenching of roughly 50% of the total fluorescence ([Figure 2C](#)). Longer incubation times of 10 and 15 min resulted in fluorescence reductions by more than 50%, indicating transmembrane dithionite transfer and quenching of part of the inner leaflet fluorophores. Previous studies revealed that the outer leaflet was quenched in the first 50–70 s in the case of SUVs, which are much smaller and highly curved.⁶² Then, transfer of dithionite ions or radicals across the membrane was observed to occur at a slower rate, leading to quenching of fluorophores residing in the inner leaflet as well (corroborating our results). The authors suggested that the membrane transfer of dithionite ions and radicals depends on the composition and structure of the observed membrane.⁶² Therefore, in the following experiments, GUV samples were diluted to low dithionite concentrations 5 min after addition of the quenching agent.

Next, different dithionite concentrations in the final quenching sample were tested. [Figure 2D](#) shows that complete quenching of the outer leaflet of GUVs is observed already at a final concentration of 2.5 mM. Using a higher concentration (10 mM) resulted in fluorescence drops by more than 50%,

indicating that dithionite ions reached some of the inner leaflet fluorophores. We hypothesize that the presence of excess dithionite ions leads to the formation of more decomposition products, which destabilize the membrane and make it permeable for nondecomposed dithionite ions that can then quench the inner leaflet fluorophores. The minimum concentration needed to quench outer leaflet fluorophores depends on the number of fluorophores and on the number of GUVs present in the sample. Therefore, the optimal dithionite concentration for a particular sample should always be tested prior to the actual experiments. For our experimental conditions (roughly 10 μ M final total lipid concentration), we chose to work with 2.5 mM dithionite and 5 min incubation time, which was sufficient to quench the NBD groups present only in the external leaflet without causing significant alterations in GUV integrity. It is important to point out how sensitive the quenching assay is to the quencher concentration and incubation time (see [Figures 2](#) and [S2](#)). Indeed, these conditions should also vary for different lipid concentrations. Therefore, it is of utmost importance that these parameters be tested carefully for each working condition before proceeding to obtain data with the quenching assay.

Membrane Asymmetry of GUVs Prepared via the Inverted Emulsion Protocol. In the previous section, we determined important parameters to optimize the quenching assay for probing membrane asymmetry. We then used the inverted emulsion protocol to obtain POPC GUVs containing 5 mol % POPG in total and 0.5 mol % NBD-PG. The PG lipids were distributed either symmetrically (referred to as sGUVs, with 5 mol % POPG in each membrane leaflet) or asymmetrically (aGUVs, with 10 mol % POPG in one of the leaflets). Two types of asymmetric GUVs were prepared: with POPG and NBD-PG restricted to either the inner (aGUV_i) or outer (aGUV_o) leaflet. Since we now have the control that sodium dithionite quenches about half of the NBD-PG dyes in sGUVs ([Figure 2](#)), we expect either full quenching when the NBD is present only in the outer layer (aGUV_o) or no quenching at all if the NBD is restricted to the inner leaflet (aGUV_i), as illustrated in [Figure 1B,C](#). Any deviations from these outcomes would imply that lipids from the water-in-oil phase used to form the inner vesicle leaflet have migrated (diffused) and inserted into the oil–water interface with lipids forming the outer GUV leaflet.

The normalized fluorescence intensity before and after quenching of sGUVs and aGUVs grown by the inverted emulsion protocol is shown in [Figure 3](#). As expected, sGUVs have their fluorescence intensity decreased by 50% after addition of sodium dithionite, consistent with data for sGUVs produced via electroformation, thus demonstrating that the employed inverted emulsion protocol efficiently produces GUVs with symmetric distribution of the charged lipids. When aGUV_i were exposed to the quenching agent, a signal reduction of ~25% was observed rather than the expected zero fluorescence intensity reduction. In the case of aGUV_o, instead of a complete quenching of the fluorescence, residual fluorescence intensity was detected (~15%) after treatment with sodium dithionite. Since under the same experimental conditions the symmetric controls showed the expected reduction by 50%, and the integrity of the aGUVs was maintained (observed by preservation of optical contrast under phase contrast), the observed outcome indicates that the inverted emulsion protocol is not efficient in generating entirely asymmetric membranes. We conclude that some

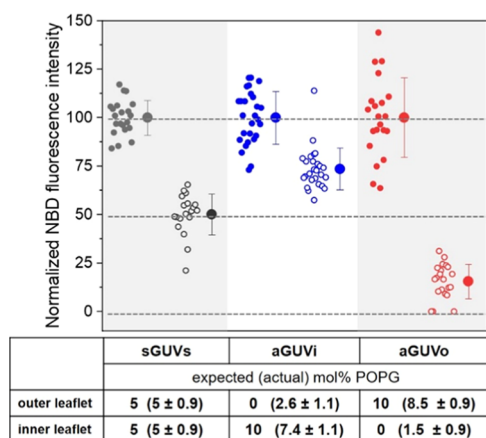


Figure 3. Normalized fluorescence intensities before (solid circles) and after (open circles) quenching of NBD-PG (0.5 mol %) for GUVs containing 5 mol % POPG symmetrically and asymmetrically distributed. Each data point represents measurements on one vesicle, and solid circles with error bars on the right indicate mean values with standard deviation. For each type of GUV membrane composition, the fluorescence intensity was normalized by the mean value of the nonquenched measurement. The dashed lines are a guide to the eye indicating the mean value of nonquenched GUVs, half of the mean value and zero. All measured GUVs had diameters between 20 and 40 μm . The quenching was done with 2.5 mM $\text{Na}_2\text{S}_2\text{O}_4$ final concentration, 5 min incubation followed by 5-fold dilution. The table shows the expected molar fraction of POPG in each leaflet as set by the preparation protocol and the one estimated from the fluorescence intensity after quenching the outer leaflet plus the standard deviation. Each condition was tested with multiple quenching experiments and using multiple GUV preparations ($n \geq 3$).

mixing (roughly about 20%) of the lipids originating from the different oil layers during the preparation procedure occurred; see estimates in Figure 3. Nonetheless, the inverted emulsion method ensured generation of membranes with a high degree of asymmetry (the leaflet asymmetry in our GUVs is comparable to that reported by Pautot et al.⁴¹).

Vesicle Stability Decreases with Increasing Membrane Charge Asymmetry. To assess the effect of membrane asymmetry on GUV stability upon poration, the vesicles were exposed to a single DC pulse (3 kV/cm and 150 μs), and the response was followed with phase contrast optical microscopy. Neutral POPC GUVs typically deformed, and the formation of micrometer-wide pores (macropores) that quickly (~ 50 ms) reseal could be observed. Subsequently, the pores reseal and the GUVs restore their integrity with preserved contrast, see Figure 4A. When a similar pulse is applied to symmetric vesicles containing high fractions of anionic lipids, additional effects could occur.³³ Some GUVs were apparently restored after macropore closure but remained in a highly permeable state revealed by the loss of sugar asymmetry within 1 min, indicating that submicroscopic pores persist after the end of the pulse (leaky vesicles, Figure 4B). Still, another fraction of GUVs collapsed through the indefinite expansion of a macropore in a phenomenon called bursting (Figure 4C). To quantify the destabilization brought by the presence of charge asymmetry, we applied single DC pulses to a collection of GUVs and evaluated the fraction of vesicles that exhibited any of these two destabilizing effects (leaky state or bursting); see Figure S3 for more information. The fraction of destabilized vesicles (X_{dest}) was measured for increasing the POPG fractions in symmetric and asymmetric GUVs (Figure 4D).

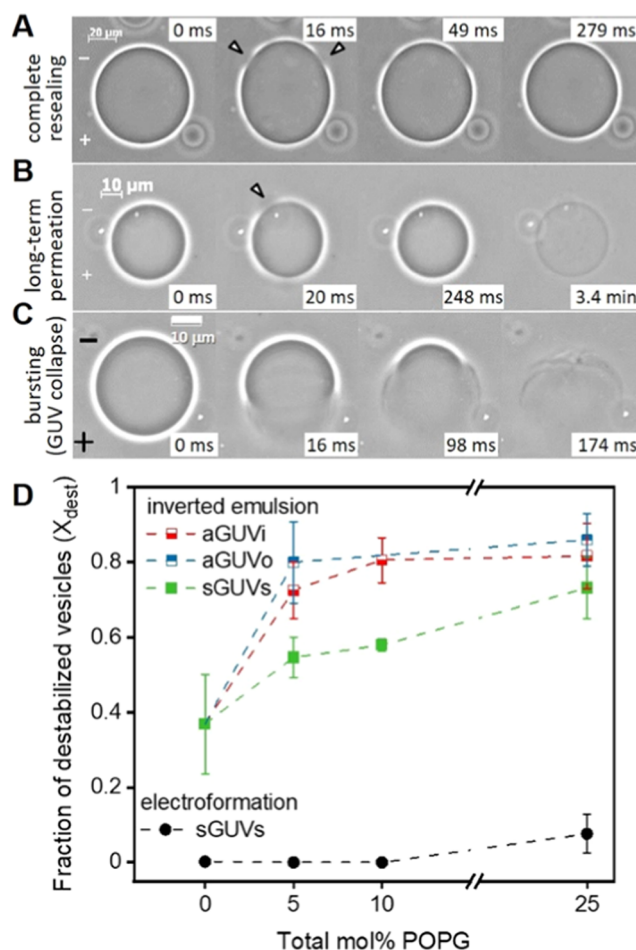


Figure 4. Effect of membrane charge asymmetry on vesicle destabilization upon electroporation. (A, C) Exemplary phase contrast microscopy images showing three possible responses of GUVs to the application of a single DC pulse (3 kV/cm and 150 μs). After the pulse application, micron-sized pores (arrowheads) can open and readily reseal restoring GUV integrity (A). Some GUVs that apparently restore their integrity after macropore closure can exhibit high permeability at a later stage revealing the persistence of long-lasting submicroscopic pores minutes after the end of the pulse (B). In more extreme cases, macropores can open indefinitely leading to vesicle bursting (C). The field polarity is indicated on the first images. (D) Fraction of destabilized vesicles, X_{dest} (comprising permeating and bursting ones as in (B) and (C); see also Figure S3) for GUVs composed of POPC containing increasing molar fraction of POPG symmetrically and asymmetrically distributed in the membrane leaflets obtained via the inverted emulsion method (solid and half-filled squares) and electroformation (solid circles). For GUVs obtained via inverted emulsion approach, average values and standard deviations for measurements on 4 to 6 vesicle preparations per composition are shown (more than 10 vesicles per preparation were monitored). For electroformed GUVs, average values and standard deviations for a number of measurements are shown for 1 vesicle preparation per composition (around 10 vesicles per composition were monitored). Measurements were made in the presence of 0.1 mM EDTA (except for 5 mol % PG sGUVs and aGUVo, prepared via the inverted emulsion protocol. Multiple GUV samples were prepared for each condition and used for the electroporation experiments ($n \geq 3$)).

The symmetric GUVs were prepared using both electroformation and the inverted emulsion method. Previous studies³³ have shown that electroformed and therefore

symmetric GUVs are destabilized only at high POPG fractions >40 mol %. Surprisingly, here we observe that symmetric GUVs prepared by the inverted emulsion method showed considerable membrane destabilization upon electroporation already for pure POPC membranes (neutral vesicles); compare first data points of black and green traces in Figure 4D. This indicates that GUVs prepared by the inverted emulsion technique are less stable compared to electroformed GUVs with the same membrane composition. Presumably, residual oil in the membrane destabilizes the vesicles upon poration. Indeed, Raman scattering microscopy has confirmed the presence of oil in the membrane of GUVs prepared by the droplet transfer method.⁷¹ In a previous study⁷² we also investigated whether the inverted emulsion approach produces membranes that exhibit different lipid packing and/or differential stress in the membrane⁷³ compared to vesicles prepared with the electroformation method. For this, we examined the vesicle morphology upon deflation and measured lipid diffusion. Vesicle deflation in both samples yielded prolate or multisphere GUVs as expected for vesicles, with sucrose/glucose asymmetry across the membrane.⁷⁴ Lipid diffusion was also found unaltered. These measurements are compiled in Figure S4. Apparently, the main difference between the vesicles prepared with the two approaches is the presence of oil, which locates between the leaflets without affecting lipid packing and symmetry.

We then explored the destabilization fraction X_{dest} for asymmetric GUVs by comparing it to that of symmetric GUVs, whereby both were prepared via the inverted emulsion technique. Interestingly, already small charge asymmetries of 5 mol % POPG considerably enhanced the membrane destabilization and were independent of the direction of the asymmetry (aGUVi or aGUVo), Figure 4D. Therefore, we conclude that charge asymmetry indeed plays an important role in membrane destabilization, rendering the membranes more prone to disturbance events and less able to fully reseal even at low molar fractions of charged species.

To explore the origin of vesicle destabilization, we measured the pore edge tension in these membranes. This parameter reflects the work performed to expand the pore boundary by a unit length and is dependent on the membrane composition. The edge tension was obtained from the relaxation dynamics of macropore closure, following an approach reported earlier²⁹ and using an automated image analysis methodology;³⁴ see the Materials and Methods section and Figure S5 for example measurements. Since a significant difference in X_{dest} was observed between sGUVs prepared by electroformation or the inverted emulsion protocol, we first compared the edge tension values of these two systems. Interestingly, there was no difference in pore edge tension γ when comparing sGUVs of the same composition (pure POPC or POPC with 10 mol % POPG) prepared by both methods (Figure S6). Hence, the observed increased destabilization of vesicles prepared by an inverted emulsion was not related to hindering macropore closure in the membrane. We conclude that the specific membrane composition, and in particular, the presence of oil residues, affects the intrinsic membrane response toward destabilization, but the oil molecules are not edge active and thus do not influence the measured edge tension values.

Figure 5 shows the edge tension data measured for aGUVs with an increasing molar fraction of POPG asymmetry (green circles and red squares). These results are a compilation of data for aGUVo and aGUVi with and without EDTA, known to

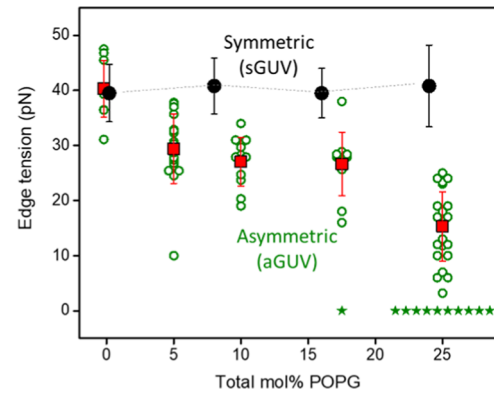


Figure 5. Pore edge tension values of GUVs composed of POPC containing increasing molar fractions of POPG, which were either symmetrically (black solid circles) or asymmetrically distributed (green open circles and red squares). The pore edge tension values for sGUVs are obtained from vesicles produced via electroformation (data published in Lira et al.³³). The open green circles represent measurements of individual vesicles. Green stars indicate vesicles that burst after the pulse and are indicated as having an edge tension value close to 0. The data for pure POPC membranes (0 mol % POPG) are slightly offset in composition for visibility. Since the type of membrane asymmetry (in terms of POPG location in the outer or inner leaflet) did not affect the pore edge tension, the data from aGUVi and aGUVo, with and without EDTA was combined (see also Figure S7, where data from aGUVi and aGUVo are given separately). A total of 87 vesicles were measured (10 to 34 vesicles per membrane composition). Multiple GUV samples were prepared for each condition and used for the electroporation experiments ($n \geq 3$).

remove possible calcium ions as contaminants from the medium, which can bind to PG lipids when present at low concentrations and alter their properties.^{32,33,75} No significant differences were observed for the same fraction of POPG irrespective of the leaflet location or the presence of EDTA (Figure S7). Data previously measured for sGUVs (grown by electroformation) with the same total fraction of POPG are also shown in Figure 5 for comparison (black data, obtained from Lira et al.³³). The mean values with standard deviations for all conditions are listed in Table 1. Inverted emulsion GUVs made of pure POPC (0 mol % POPG) have edge

Table 1. Edge Tension Values Measured for Symmetric (sGUVs) and for Asymmetric (aGUVs) of POPC with Increasing Total Mole Fraction of POPG

	preparation method	total mol % POPG	edge tension (pN)
sGUVs	electroformation	0	40.4 ± 7.9
			39.5 ± 5.2 ^a
		8	40.8 ± 5.1 ^a
		10	40.0 ± 5.1
		16	39.5 ± 4.5 ^a
		24	40.8 ± 7.4 ^a
sGUVs	inverted emulsion	50	23.4 ± 6.0 ^a
		0	40.3 ± 5.1
		10	37.9 ± 7.9
aGUVs	inverted emulsion	0	40.3 ± 5.1
		5	29.4 ± 6.4
		10	27.0 ± 4.4
		17.5	26.6 ± 5.8
		25	15.3 ± 6.3

^aData are from ref 33.

tension comparable to literature data.^{29,33,76,77} However, aGUVs containing 5, 10, and 17.5 mol % POPG showed a significant edge tension reduction. Comparing vesicles with the same surface charge composition of one of the leaflets, aGUVs containing 25 mol % POPG showed even stronger reduction in the edge tension (~ 15 pN) compared to sGUVs that expose the same POPG fraction but contain twice higher amount of anionic lipid in total (~ 23 pN for 50 mol % in total),^{33,34} see Table 1.

The edge tension results show that the increase in the molar fraction of POPG results in membranes that are more prone to poration (less energy is needed for pore expansion), and this trend was significantly enhanced when the charges were asymmetrically distributed. A much lower fraction of the charged lipid in the asymmetric membrane compared to the symmetric one is sufficient to cause a significant reduction in the edge tension values. When discussing results on sGUVs and aGUVs, we made the comparison based on the total amount of POPG that can either be homogeneously distributed between both monolayers (sGUVs) or almost entirely restricted to one of the monolayers (aGUVs). We also considered the comparison based not on the total POPG amount but on the POPG fraction in the POPG-rich leaflet (in this case, the amount of POPG in the POPG-rich leaflet of asymmetric membranes is almost double the one in the symmetric ones with the same total POPG fraction) because it could be that the POPG-rich leaflet dictates the behavior of the whole bilayer. These analyses for the fraction of destabilized GUVs, X_{dest} , and edge tension are provided in Figure S8. Even when the symmetric membrane has as much POPG as the POPG-rich side of the asymmetric one, aGUVs are still more unstable than sGUVs, regarding both X_{dest} and pore edge tension.

Above we observed that the preparation method had no effect on the edge tension of symmetric membranes. On the other hand, the fraction of destabilized vesicles, X_{dest} , which quantifies the occurrence of leaky membranes and vesicle burst after electroporation, was significantly higher for vesicles prepared by the inverted emulsion protocol, even in symmetric cases. Therefore, we hypothesized that traces of oil used to disperse the lipids from the two different monolayers that are present in the membrane affect membrane stability. Presumably, the oil confined between the membrane leaflets can influence their degree of interdigitation and coupling, thus, affecting the overall stability of the membrane. However, this speculation remains to be explored, and the precise amount of oil quantified. To confirm that the main source of instability was brought by charge asymmetry, we also generated membrane asymmetry in the GUVs by a very different approach, namely, by varying the pH across the membrane.

Charge Asymmetry Caused by Different pH Values across the Membrane also Destabilizes Membranes.

The phosphate group of POPG has a pK_a around 4.⁷⁸ To generate asymmetry, we prepared sGUVs via electroformation containing 20 mol % POPG at neutral pH and then dispersed the GUVs in low-pH solution so that protonation of POPG in the outer layer generated charge asymmetry across the membrane. Figure 6A shows the fraction of destabilized GUVs after electroporation (X_{dest}) for sGUVs made of POPC with 20 mol % POPG prepared in neutral pH and then dispersed in solutions of different lower pH values down to pH 3; note that the data corresponding to conditions of pH 7 represent the behavior of symmetric membranes (sGUVs).

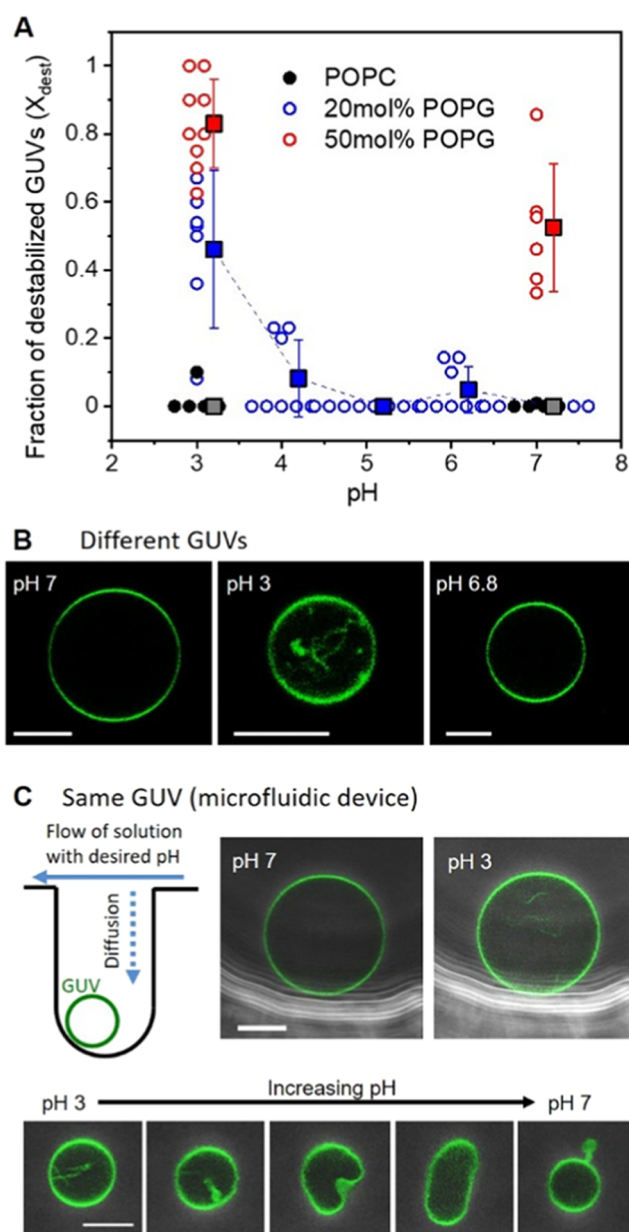


Figure 6. Membrane charge asymmetry generated by different pH values across the membrane destabilizes GUVs. (A) Fraction of destabilized vesicles as a function of the external pH of GUVs grown in neutral pH (internal pH 7; note that data acquired at pH 7 correspond to symmetric sGUVs). Circles show values for each observation chamber and filled squares (shifted to the right for clarity) represent the mean values with standard deviation. (B) Representative confocal microscopy images of GUVs of POPC with 20 mol % POPG (0.5 mol % PG-NBD) obtained after dispersing the GUVs of the same sample in pH 7, pH 3, and back to pH 6.8. Scale bars represent 10 μm . Multiple GUV samples were prepared for each condition and used for the electroporation experiments ($n \geq 3$). (C) Single-vesicle experiment demonstrating membrane asymmetry generated by exchanging the solution outside the GUV, using a microfluidic trapping device (see also Figure S9). As shown in the sketch, a GUV is trapped in a dead-end channel oriented perpendicular to the flow of the solution that is exchanged. In the dead-end channel, the GUV is shielded from the perturbation of the hydrodynamic flow, which allows us to follow the same vesicle over time. Overlay of phase contrast and confocal microscopy images of GUVs of POPC with 20 mol % POPG (1 mol % PG-NBD) trapped in the dead-end channels of the microfluidic device. The outer

Figure 6. continued

solution is exchanged with solutions of desired pH. Upon exchanging the solution from pH 7 to 3, the vesicle develops an inward tube (upper couple of images). Increasing the pH back to 7 causes a vesicle with internal tubules to expel the excess membrane area into the outward bud (lower set of images; the time between the first and last image is approximately 5 min).

The scatter in the data is somewhat larger compared to that observed for asymmetric membranes prepared with the inverted emulsion method. We speculate that it could be caused by permeation of the hydronium ions across the membrane decreasing the degree of asymmetry. Despite this concern, the data show that X_{dest} increases significantly for pH 3, which is below the pK_a of the phosphate group, but does not change considerably when the external pH is between 4 and 7 (see blue data points in Figure 6A). As a control, we also prepared GUVs made of pure POPC and of POPC with 50 mol % POPG and measured X_{dest} when the external solution was neutral or at pH 3. As expected, POPC was not destabilized in any pH because the pK_a of its phosphate group is lower than 3^{79,80} (black data in Figure 6A), whereas POPC with 50 mol % POPG showed already a significant destabilization at neutral pH, as reported earlier,³³ but even stronger when at pH 3 (red data in Figure 6A).

In summary, the destabilization effect of charged lipids in asymmetric membranes was already pronounced at low POPG fraction as a result of extremely reduced pore edge tension, whereas anionic sGUVs were only affected at membrane compositions of around 50 mol % POPG. We speculate that one important destabilization factor, in addition to the effect of charged lipids, is a high spontaneous curvature that is caused by the area mismatch between the leaflets of membranes with increased POPG asymmetry.

The main concern about this approach is whether the pH asymmetry is indeed maintained during the observation and whether the protonated POPG flips across the membrane, thus obliterating the asymmetry.⁸¹ Since POPG and its analogue counterpart NBD-PG are symmetrically distributed, the quenching assay is of no use here, and in addition, sodium dithionite is much more unstable at acidic pH. Another way to qualitatively confirm the presence of membrane asymmetry is to probe for spontaneous curvature changes expressed in the tubulation of GUVs with excess area.^{59–61} Since protonated POPG has a smaller area per headgroup than its charged state,⁸² charge asymmetry will also cause area imbalance giving rise to membrane spontaneous curvature. We noticed that after dispersion of GUVs of POPC with 20 mol % POPG in solutions of pH 3, inward tubes were detected in some GUVs, whereas when no pH asymmetry was present, GUVs were mainly spherical with smooth membrane and free of tubes (see Figure 6B). To show that the asymmetry was maintained after dispersing the GUVs at pH 3, we increased again the pH of the external solution after inner tubes were formed at pH 3. The tubes were suppressed, showing that the area of the external layer was reestablished and brought back to that of the internal one, and no flip-flop of the protonated PG occurred.

These bulk experiments, although encouraging, suffer from the disadvantage that the prehistory of the individual vesicles selected for observation is unknown. To confirm that asymmetry is established, we performed single-vesicle experiments where an individual sGUV with an internal pH of 7 is

exposed to a solution of pH 3 under constant microscopy monitoring. The vesicles were trapped using a microfluidic trap described previously.⁶⁷ As expected, and upon exchange of their external solution, the GUVs responded by forming inward-pointing tubes stabilized by the negative spontaneous curvature (see Figure 6C), confirming the induced pH asymmetry for POPC vesicles with 20 mol % POPG. Conversely, increasing the external pH causes inward tubes to be suppressed (Figure 6C). No tubes were generated in GUVs made of pure POPC.

CONCLUSIONS

Model membranes such as GUVs can be versatile tools to understand the importance and influence of asymmetry in membranes. To draw the right conclusions, the membranes must be well characterized. A useful approach to verify membrane asymmetry is the quenching assay, although its application requires precaution. We showed that the stabilization of the dithionite ion and radical is crucial to a successful quenching assay. We identified important conditions that have to be considered and tested for each sample system to avoid any misinterpretation of the obtained results. As described by McIntyre and Sleight, sodium dithionite has to be dissolved in a buffer of alkaline pH,⁶² and, most importantly, should be prepared always immediately before usage. The destabilization of the quenching agent and thereby formation of undesired decomposition products can be reduced by the usage of low-concentrated stock solutions. To avoid membrane destabilization by the presence of dithionite decomposition products (e.g., hydrogen sulfite and hydrogen sulfate), the dithionite concentration should be adjusted to the minimal quenching concentration, and subsequent dilution is required after quenching of the outer leaflet is finished. Despite the multiple reported protocols for quenching assays performed on SUVs, LUVs, GUVs, and cells,^{59,62–64} the needed precaution for the handling of sodium dithionite is often underrated, which makes it difficult for readers to reproduce the experimental protocol. Moreover, different membrane systems can show different membrane permeability of the quenching agent.^{63,64} Our work should raise awareness of the demanding character of the quenching agent used and provide a guide to optimize and adjust the quenching conditions for different samples and experimental setups.

We then investigated the membrane stability upon electroporation as a function of charge asymmetry. The results presented here emphasize the impact of anionic lipids on the stability of model membranes in which the charge distribution is closer to the reality of the cell membrane. We considered not only the effect of increasing the fraction of charged lipids but also the charge lipid asymmetry existing between the membrane leaflets. The latter was established in two ways: using the inverted emulsion protocol for GUV preparation and as induced by pH asymmetry in the solutions across the membrane. As discussed in the Introduction, leaflet asymmetry is capable of dictating various cellular functions by modifying the material properties of membranes, and although some studies have investigated lipid asymmetry among monolayers, none of them directly addressed the effect of charge asymmetry between them. To the best of our knowledge, this is the first work to show that charge asymmetry plays an important role in cell membrane destabilization and permeability after electroporation. The origin of this destabilization is partially related to changes in membrane composition, as reflected in the changes

in the edge tension values. This result can be juxtaposed to data showing changes in the bending rigidity of asymmetric vs symmetric membranes for the same overall membrane composition.⁶⁶ This finding was recently interpreted as potentially arising from differential stress (resulting not from compositional but area difference of the leaflets^{73,83}). It remains to be shown whether membrane destabilization, as demonstrated here, is a result of such differential stress. We expect that our finding for this asymmetry-enhanced destabilization will contribute toward understanding of the arsenal of recovery and pore-resealing mechanisms developed by cells in wound healing processes.

Finally, our results also suggested that the inverted emulsion method for generating asymmetric GUVs adds some instability to the membrane that is still to be investigated but should be considered when studying membrane parameters that can be affected by possible oil contamination. The presence of oil in the membrane could affect the degree of interleaflet interdigitation. Molecular dynamic simulations in this direction could shed light on this direction.

■ ASSOCIATED CONTENT

SI Supporting Information

The Supporting Information is available free of charge at <https://pubs.acs.org/doi/10.1021/acs.langmuir.3c03370>.

Data demonstrating the importance of pH of the sodium dithionite stock solution; dependence of the quenching efficiency on the incubation time and quencher concentration; quantification of the destabilizing effects caused by electric pulses; examples of pore closure dynamics and edge tension measurements for symmetrical and asymmetrical GUVs; comparison of edge tension measurements on symmetrical GUVs prepared by electroformation and inverted emulsion technique and by orientation of charge asymmetry and presence of EDTA; fraction of destabilized vesicles as a function of molar fraction of POPG in the POPG-rich side; and single-vesicle experiments with pH exchange (PDF)

Vesicle composed of POPC/POPG in the molar ratio of 8:2 and containing 1 mol % NBD-PG electroformed on ITO glasses in the presence of 200 mM sucrose solution at pH 7 (Movie S1) (MP4)

Vesicle composed of POPC/POPG in the molar ratio of 8:2 and containing 1 mol % NBD-PG electroformed on ITO glasses in the presence of 200 mM sucrose solution at pH 7 (Movie S2) (MP4)

■ AUTHOR INFORMATION

Corresponding Authors

Karin A. Riske — Departamento de Biofísica, Universidade Federal de São Paulo, São Paulo 04039-032, Brazil; orcid.org/0000-0003-4080-1358; Email: kariske@unifesp.br

Rumiana Dimova — Max Planck Institute of Colloids and Interfaces, 14776 Potsdam, Germany; orcid.org/0000-0002-3872-8502; Email: Rumiana.Dimova@mpikg.mpg.de

Authors

Fernanda S. C. Leomil — Max Planck Institute of Colloids and Interfaces, 14776 Potsdam, Germany; Departamento de

Biofísica, Universidade Federal de São Paulo, São Paulo 04039-032, Brazil

Mareike Stephan — Max Planck Institute of Colloids and Interfaces, 14776 Potsdam, Germany

Shreya Pramanik — Max Planck Institute of Colloids and Interfaces, 14776 Potsdam, Germany

Complete contact information is available at:

<https://pubs.acs.org/10.1021/acs.langmuir.3c03370>

Author Contributions

[§]F.S.C.L. and M.S. contributed equally to this work. R.D. and K.A.R. designed and supervised the project. All authors designed the experiments. F.S.C.L. and M.S. performed the experiments with bulk GUV studies and analyzed the data. S.P. performed the microfluidic single-vesicle experiments. F.S.C.L., M.S., K.A.R., and R.D. wrote the manuscript. All authors edited the manuscript.

Funding

Open access funded by Max Planck Society.

Notes

The authors declare no competing financial interest.

■ ACKNOWLEDGMENTS

This work was supported by CAPES (Coordination for the Improvement of Higher Education Personnel), FAPESP (São Paulo Research Foundation [grant number 2016/13368-4]), and the MPS (Max Planck Society) via the International Max Planck Research School on Multiscale BioSystems. M.S. acknowledges funding from the International Max Planck Research School on Multiscale BioSystems. S.P. was supported by the Max Planck School for Matter to Life.

■ REFERENCES

- (1) Lorent, J. H.; Levental, K. R.; Ganesan, L.; Rivera-Longworth, G.; Sezgin, E.; Doktorova, M.; Lyman, E.; Levental, I. Plasma Membranes Are Asymmetric in Lipid Unsaturation, Packing and Protein Shape. *Nat. Chem. Biol.* **2020**, *16* (6), 644–652.
- (2) Bretscher, M. S. Asymmetrical Lipid Bilayer Structure for Biological Membranes. *Nat. New Biol.* **1972**, *236* (61), 11–12.
- (3) Devaux, P. F. Static and Dynamic Lipid Asymmetry in Cell Membranes. *Biochemistry* **1991**, *30* (5), 1163–1173.
- (4) Fadok, V. A.; Henson, P. M. Apoptosis: Getting Rid of the Bodies. *Curr. Biol.* **1998**, *8* (19), R693–R695.
- (5) Lentz, B. R. Exposure of Platelet Membrane Phosphatidylserine Regulates Blood Coagulation. *Prog. Lipid Res.* **2003**, *42*, 423–438, DOI: [10.1016/S0163-7827\(03\)00025-0](https://doi.org/10.1016/S0163-7827(03)00025-0).
- (6) Riedl, S.; Rinner, B.; Asslauer, M.; Schaidler, H.; Walzer, S.; Novak, A.; Lohner, K.; Zwegitck, D. In Search of a Novel Target - Phosphatidylserine Exposed by Non-Apoptotic Tumor Cells and Metastases of Malignancies with Poor Treatment Efficacy. *Biochim. Biophys. Acta, Biomembr.* **2011**, *1808* (11), 2638–2645.
- (7) Bevers, E. M.; Williamson, P. L. Getting to the Outer Leaflet: Physiology of Phosphatidylserine Exposure at the Plasma Membrane. *Physiol. Rev.* **2016**, *96* (2), 605–645.
- (8) Fadok, V. A.; Bratton, D. L.; Frasch, S. C.; Warner, M. L.; Henson, P. M. The Role of Phosphatidylserine in Recognition of Apoptotic Cells by Phagocytes. *Cell Death Differ.* **1998**, *5* (7), 551–562, DOI: [10.1038/sj.cdd.4400404](https://doi.org/10.1038/sj.cdd.4400404).
- (9) Callahan, M. K.; Williamson, P.; Schlegel, R. A. Surface Expression of Phosphatidylserine on Macrophages Is Required for Phagocytosis of Apoptotic Thymocytes. *Cell Death Differ.* **2000**, *7* (7), 645–653.
- (10) Daleke, D. L. Phospholipid Flippases. *J. Biol. Chem.* **2007**, *282* (2), 821–825.

- (11) van Meer, G. Dynamic Transbilayer Lipid Asymmetry. *Cold Spring Harbor Perspect. Biol.* **2011**, *3* (5), No. a004671.
- (12) Allhusen, J. S.; Conboy, J. C. The Ins and Outs of Lipid Flip-Flop. *Acc. Chem. Res.* **2017**, *50* (1), 58–65.
- (13) Doktorova, M.; Symons, J. L.; Levental, I. Structural and Functional Consequences of Reversible Lipid Asymmetry in Living Membranes. *Nat. Chem. Biol.* **2020**, *16* (12), 1321–1330.
- (14) McNeil, P. L.; Steinhardt, R. A. Loss, Restoration, and Maintenance of Plasma Membrane Integrity. *J. Cell Biol.* **1997**, *137* (1), 1.
- (15) McNeil, P. L.; Steinhardt, R. A. Plasma Membrane Disruption: Repair, Prevention, Adaptation. *Annu. Rev. Cell Dev. Biol.* **2003**, *19*, 697–731.
- (16) Kinosita, K.; Ashikawa, I.; Saita, N.; Yoshimura, H.; Itoh, H.; Nagayama, K.; Ikegami, A. Electroporation of Cell Membrane Visualized under a Pulsed-Laser Fluorescence Microscope. *Biophys. J.* **1988**, *53* (6), 1015–1019.
- (17) Kinosita, K.; Tsong, T. Y. Voltage-Induced Pore Formation and Hemolysis of Human Erythrocytes. *Biochim. Biophys. Acta, Biomembr.* **1977**, *471* (2), 227–242.
- (18) Mir, L. M.; Orlowski, S.; Belehradek, J.; Paoletti, C. Electrochemotherapy Potentiation of Antitumor Effect of Bleomycin by Local Electric Pulses. *Eur. J. Cancer Clin. Oncol.* **1991**, *27* (1), 68–72.
- (19) Belehradek, M.; Domenge, C.; Luboinski, B.; Orlowski, S.; Belehradek, J.; Mir, L. M. Electrochemotherapy, a New Antitumor Treatment. First Clinical Phase I-II Trial. *Cancer* **1993**, *72* (12), 3694–3700.
- (20) Mali, B.; Jarm, T.; Snoj, M.; Sersa, G.; Miklavcic, D. Antitumor Effectiveness of Electrochemotherapy: A Systematic Review and Meta-Analysis. *Eur. J. Surg. Oncol.* **2013**, *39* (1), 4–16.
- (21) Frandsen, S. K.; Vissing, M.; Gehl, J. A Comprehensive Review of Calcium Electroporation—A Novel Cancer Treatment Modality. *Cancers* **2020**, *12* (2), 290.
- (22) Yarmush, M. L.; Golberg, A.; Serša, G.; Kotnik, T.; Miklavcic, D. Electroporation-Based Technologies for Medicine: Principles, Applications, and Challenges. *Annu. Rev. Biomed. Eng.* **2014**, *16* (1), 295–320.
- (23) Lambricht, L.; Lopes, A.; Kos, S.; Sersa, G.; Pr  at, V.; Vandermeulen, G. Clinical Potential of Electroporation for Gene Therapy and DNA Vaccine Delivery. *Expert Opin. Drug Delivery* **2016**, *13* (2), 295–310.
- (24) Keating, A.; Toneguzzo, F. Gene Transfer by Electroporation: A Model for Gene Therapy. *Prog. Clin. Biol. Res.* **1990**, *333*, 491–498.
- (25) Rols, M. P. Electroporation-Based, a Physical Method for the Delivery of Therapeutic Molecules into Cells. *Biochim. Biophys. Acta, Biomembr.* **2006**, *1758* (3), 423–428.
- (26) Dimova, R.; Marques, C. *The Giant Vesicle Book*; CRC Press: Boca Raton, 2019.
- (27) Riske, K. A.; Dimova, R. Electro-Deformation and Poration of Giant Vesicles Viewed with High Temporal Resolution. *Biophys. J.* **2005**, *88* (2), 1143–1155.
- (28) Riske, K. A.; Dimova, R. Electric Pulses Induce Cylindrical Deformations on Giant Vesicles in Salt Solutions. *Biophys. J.* **2006**, *91* (5), 1778–1786.
- (29) Portet, T.; Dimova, R. A New Method for Measuring Edge Tensions and Stability of Lipid Bilayers: Effect of Membrane Composition. *Biophys. J.* **2010**, *99* (10), 3264–3273.
- (30) Sabri, E.; Aleksanyan, M.; Brosseau, C.; Dimova, R. Effects of Solution Conductivity on Macropore Size Dynamics in Electroporated Lipid Vesicle Membranes. *Bioelectrochemistry* **2022**, *147*, No. 108222.
- (31) Portet, T.; Mauroy, C.; D  mery, V.; Houles, T.; Escoffier, J.-M.; Dean, D. S.; Rols, M.-P. Destabilizing Giant Vesicles with Electric Fields: An Overview of Current Applications. *J. Membr. Biol.* **2012**, *245* (9), 555–564.
- (32) Riske, K. A.; Knorr, R. L.; Dimova, R. Bursting of Charged Multicomponent Vesicles Subjected to Electric Pulses. *Soft Matter* **2009**, *5* (10), 1983.
- (33) Lira, R. B.; Leomil, F. S. C.; Melo, R. J.; Riske, K. A.; Dimova, R. To Close or to Collapse: The Role of Charges on Membrane Stability upon Pore Formation. *Adv. Sci.* **2021**, *8* (11), No. 2004068.
- (34) Leomil, F. S. C.; Zoccoler, M.; Dimova, R.; Riske, K. A. PoET: Automated Approach for Measuring Pore Edge Tension in Giant Unilamellar Vesicles. *Bioinforma. Adv.* **2021**, *1* (1), No. vbab037, DOI: 10.1093/bioadv/vbab037.
- (35) Aleksanyan, M.; Lira, R. B.; Steink  hler, J.; Dimova, R. GM1 Asymmetry in the Membrane Stabilizes Pores. *Biophys. J.* **2022**, *121* (17), 3295–3302.
- (36) Brochard-Wyart, F.; de Gennes, P. G.; Sandre, O. Transient Pores in Stretched Vesicles: Role of Leak-Out. *Phys. A* **2000**, *278* (1–2), 32–51.
- (37) Angelova, M. I.; Sol  au, S.; M  l  ard, P.; Faucon, F.; Bothorel, P. Preparation of Giant Vesicles by External AC Electric Fields. Kinetics and Applications. In *Trends in Colloid and Interface Science VI*; Helm, C.; L  sche, M.; M  hwald, H., Eds.; Steinkopff: Darmstadt, 1992; pp 127–131.
- (38) Cheng, H.-T.; Megha; London, E. Preparation and Properties of Asymmetric Vesicles That Mimic Cell Membranes. *J. Biol. Chem.* **2009**, *284* (10), 6079–6092.
- (39) Cheng, H.-T.; London, E. Preparation and Properties of Asymmetric Large Unilamellar Vesicles: Interleaflet Coupling in Asymmetric Vesicles Is Dependent on Temperature but Not Curvature. *Biophys. J.* **2011**, *100* (11), 2671–2678.
- (40) Visco, I.; Chiantia, S.; Schwill, P. Asymmetric Supported Lipid Bilayer Formation via Methyl- β -Cyclodextrin Mediated Lipid Exchange: Influence of Asymmetry on Lipid Dynamics and Phase Behavior. *Langmuir* **2014**, *30* (25), 7475–7484.
- (41) Pautot, S.; Frisken, B. J.; Weitz, D. A. Engineering Asymmetric Vesicles. *Proc. Natl. Acad. Sci. U.S.A.* **2003**, *100* (19), 10718–10721.
- (42) Pautot, S.; Frisken, B. J.; Weitz, D. A. Production of Unilamellar Vesicles Using an Inverted Emulsion. *Langmuir* **2003**, *19* (7), 2870–2879.
- (43) Moga, A.; Yandrapalli, N.; Dimova, R.; Robinson, T. Optimization of the Inverted Emulsion Method for High-Yield Production of Biomimetic Giant Unilamellar Vesicles. *ChemBioChem* **2019**, *20* (20), 2674–2682.
- (44) Noireaux, V.; Libchaber, A. A Vesicle Bioreactor as a Step toward an Artificial Cell Assembly. *Proc. Natl. Acad. Sci. U.S.A.* **2004**, *101* (51), 17669–17674.
- (45) Nishimura, K.; Suzuki, H.; Toyota, T.; Yomo, T. Size Control of Giant Unilamellar Vesicles Prepared from Inverted Emulsion Droplets. *J. Colloid Interface Sci.* **2012**, *376* (1), 119–125.
- (46) Stachowiak, J. C.; Richmond, D. L.; Li, T. H.; Liu, A. P.; Parekh, S. H.; Fletcher, D. A. Unilamellar Vesicle Formation and Encapsulation by Microfluidic Jetting. *Proc. Natl. Acad. Sci. U.S.A.* **2008**, *105* (12), 4697–4702.
- (47) Abkarian, M.; Loiseau, E.; Massiera, G. Continuous Droplet Interface Crossing Encapsulation (CDICE) for High Throughput Monodisperse Vesicle Design. *Soft Matter* **2011**, *7* (10), 4610–4614.
- (48) Shum, H. C.; Lee, D.; Yoon, I.; Kodger, T.; Weitz, D. A. Double Emulsion Templated Monodisperse Phospholipid Vesicles. *Langmuir* **2008**, *24* (15), 7651–7653.
- (49) Enoki, T. A.; Feigenson, G. W. Asymmetric Bilayers by Hemifusion: Method and Leaflet Behaviors. *Biophys. J.* **2019**, *117* (6), 1037–1050.
- (50) Feigenson, G. W.; Huang, J.; Enoki, T. A. An Unexpected Driving Force for Lipid Order Appears in Asymmetric Lipid Bilayers. *J. Am. Chem. Soc.* **2023**, *145* (40), 21717–21722.
- (51) Yeagle, P. L.; Hutton, W. C.; Martin, R. B. Transmembrane Asymmetry of Vesicle Lipids. *J. Biol. Chem.* **1976**, *251* (7), 2110–2112.
- (52) Franzin, C. M.; Macdonald, P. M. Detection and Quantification of Asymmetric Lipid Vesicle Fusion Using Deuterium NMR. *Biochemistry* **1997**, *36* (9), 2360–2370.
- (53) Tra  kia, M.; Warschawski, D. E.; Lambert, O.; Rigaud, J.-L.; Devaux, P. F. Asymmetrical Membranes and Surface Tension. *Biophys. J.* **2002**, *83* (3), 1443–1454.

- (54) Marquardt, D.; Heberle, F. A.; Miti, T.; Eicher, B.; London, E.; Katsaras, J.; Pabst, G. 1 H NMR Shows Slow Phospholipid Flip-Flop in Gel and Fluid Bilayers. *Langmuir* **2017**, *33* (15), 3731–3741.
- (55) Gerelli, Y.; Porcar, L.; Lombardi, L.; Fragneto, G. Lipid Exchange and Flip-Flop in Solid Supported Bilayers. *Langmuir* **2013**, *29* (41), 12762–12769.
- (56) Nguyen, M. H. L.; DiPasquale, M.; Rickeard, B. W.; Doktorova, M.; Heberle, F. A.; Scott, H. L.; Barrera, F. N.; Taylor, G.; Collier, C. P.; Stanley, C. B.; Katsaras, J.; Marquardt, D. Peptide-Induced Lipid Flip-Flop in Asymmetric Liposomes Measured by Small Angle Neutron Scattering. *Langmuir* **2019**, *35* (36), 11735–11744.
- (57) Karamdad, K.; Law, R. V.; Seddon, J. M.; Brooks, N. J.; Ces, O. Studying the Effects of Asymmetry on the Bending Rigidity of Lipid Membranes Formed by Microfluidics. *Chem. Commun.* **2016**, *52* (30), 5277–5280.
- (58) Lipowsky, R. Spontaneous Tubulation of Membranes and Vesicles Reveals Membrane Tension Generated by Spontaneous Curvature. *Faraday Discuss.* **2013**, *161*, 305–331.
- (59) Steinkühler, J.; De Tillieux, P.; Knorr, R. L.; Lipowsky, R.; Dimova, R. Charged Giant Unilamellar Vesicles Prepared by Electroformation Exhibit Nanotubes and Transbilayer Lipid Asymmetry. *Sci. Rep.* **2018**, *8* (1), No. 11838.
- (60) Dasgupta, R.; Miettinen, M. S.; Fricke, N.; Lipowsky, R.; Dimova, R. The Glycolipid GM1 Reshapes Asymmetric Biomembranes and Giant Vesicles by Curvature Generation. *Proc. Natl. Acad. Sci. U.S.A.* **2018**, *115* (22), 5756–5761.
- (61) Karimi, M.; Steinkühler, J.; Roy, D.; Dasgupta, R.; Lipowsky, R.; Dimova, R. Asymmetric Ionic Conditions Generate Large Membrane Curvatures. *Nano Lett.* **2018**, *18* (12), 7816–7821.
- (62) McIntyre, J. C.; Sleight, R. G. Fluorescence Assay for Phospholipid Membrane Asymmetry. *Biochemistry* **1991**, *30* (S1), 11819–11827.
- (63) Pomorski, T.; Herrmann, A.; Zachowski, A.; Devaux, P. F.; Müllery, P. Rapid Determination of the Transbilayer Distribution of NBD-Phospholipids in Erythrocyte Membranes with Dithionite. *Mol. Membr. Biol.* **1994**, *11* (1), 39–44.
- (64) Angeletti, C.; Nichols, J. W. Dithionite Quenching Rate Measurement of the Inside–Outside Membrane Bilayer Distribution of 7-Nitrobenz-2-Oxa-1,3-Diazol-4-Yl-Labeled Phospholipids †. *Biochemistry* **1998**, *37* (43), 15114–15119.
- (65) Angelova, M. I.; Dimitrov, D. S. Liposome Electroformation. *Faraday Discuss. Chem. Soc.* **1986**, *81* (0), 303.
- (66) Elani, Y.; Purushothaman, S.; Booth, P. J.; Seddon, J. M.; Brooks, N. J.; Law, R. V.; Ces, O. Measurements of the Effect of Membrane Asymmetry on the Mechanical Properties of Lipid Bilayers. *Chem. Commun.* **2015**, *51* (32), 6976–6979.
- (67) Pramanik, S.; Steinkühler, J.; Dimova, R.; Spatz, J.; Lipowsky, R. Binding of His-Tagged Fluorophores to Lipid Bilayers of Giant Vesicles. *Soft Matter* **2022**, *18* (34), 6372–6383.
- (68) Lem, W. J.; Wayman, M. Decomposition of Aqueous Dithionite. Part I. Kinetics of Decomposition of Aqueous Sodium Dithionite. *Can. J. Chem.* **1970**, *48* (5), 776–781.
- (69) Vegunta, V. L. A Study on the Thermal Stability of Sodium Dithionite Using ATR-FTIR Spectroscopy 2016, No. June, 272.
- (70) Burlamacchi, L.; Guarini, G.; Tiezzi, E. Mechanism of Decomposition of Sodium Dithionite in Aqueous Solution. *Trans. Faraday Soc.* **1969**, *65*, 496–502.
- (71) Kamiya, K.; Kawano, R.; Osaki, T.; Akiyoshi, K.; Takeuchi, S. Cell-Sized Asymmetric Lipid Vesicles Facilitate the Investigation of Asymmetric Membranes. *Nat. Chem.* **2016**, *8* (9), 881–889.
- (72) Stephan, M. S.; Dunsing, V.; Pramanik, S.; Chiantia, S.; Barbirz, S.; Robinson, T.; Dimova, R. Biomimetic Asymmetric Bacterial Membranes Incorporating Lipopolysaccharides. *Biophys. J.* **2023**, *122*, 2147.
- (73) Hossein, A.; Deserno, M. Spontaneous Curvature, Differential Stress, and Bending Modulus of Asymmetric Lipid Membranes. *Biophys. J.* **2020**, *118* (3), 624–642.
- (74) Bhatia, T.; Christ, S.; Steinkühler, J.; Dimova, R.; Lipowsky, R. Simple Sugars Shape Giant Vesicles into Multispheres with Many Membrane Necks. *Soft Matter* **2020**, *16* (5), 1246–1258.
- (75) Riske, K. A.; Döbereiner, H.-G.; Lamy-Freund, M. T. Comment on “Gel-Fluid Transition in Dilute versus Concentrated DMPG Aqueous Dispersions. *J. Phys. Chem. B* **2003**, *107* (22), 5391–5392.
- (76) Mattei, B.; Lira, R. B.; Perez, K. R.; Riske, K. A. Membrane Permeabilization Induced by Triton X-100: The Role of Membrane Phase State and Edge Tension. *Chem. Phys. Lipids* **2017**, *202*, 28–37.
- (77) Casadei, B. R.; Dimova, R.; Riske, K. A. Bending Modulus and Edge Tension of Giant Unilamellar Vesicles (GUVs) Composed of Lipid Extracts from Erythrocytes Membranes. *Biophys. J.* **2018**, *114* (3), 94a.
- (78) Watts, A.; Harlos, K.; Maschke, W.; Marsh, D. Control of the Structure and Fluidity of Phosphatidylglycerol Bilayers by PH Titration. *Biochim. Biophys. Acta, Biomembr.* **1978**, *510* (1), 63–74.
- (79) Garidel, P.; Johann, C.; Mennicke, L.; Blume, A. The Mixing Behavior of Pseudobinary Phosphatidylcholine-Phosphatidylglycerol Mixtures as a Function of PH and Chain Length. *Eur. Biophys. J.* **1997**, *26* (6), 447–459.
- (80) Moncelli, M. R.; Becucci, L.; Guidelli, R. The Intrinsic PKa Values for Phosphatidylcholine, Phosphatidylethanolamine, and Phosphatidylserine in Monolayers Deposited on Mercury Electrodes. *Biophys. J.* **1994**, *66* (6), 1969–1980.
- (81) Khalifat, N.; Rahimi, M.; Bitbol, A.-F.; Seigneuret, M.; Fournier, J.-B.; Puff, N.; Arroyo, M.; Angelova, M. I. Interplay of Packing and Flip-Flop in Local Bilayer Deformation. How Phosphatidylglycerol Could Rescue Mitochondrial Function in a Cardiolipin-Deficient Yeast Mutant. *Biophys. J.* **2014**, *107* (4), 879–890.
- (82) Khalifat, N.; Puff, N.; Bonneau, S.; Fournier, J.-B.; Angelova, M. I. Membrane Deformation under Local PH Gradient: Mimicking Mitochondrial Cristae Dynamics. *Biophys. J.* **2008**, *95* (10), 4924–4933.
- (83) Lyman, E.; Sodt, A. J. Differential or Curvature Stress? Modus Vivendi. *Biophys. J.* **2020**, *118* (3), 535–537.

Supporting Information

Bilayer charge asymmetry and oil residues destabilizes membranes upon poration

Fernanda S. C. Leomil^{1,2,†}, Mareike Stephan^{1,†}, Shreya Pramanik¹, Karin A. Riske^{2,*}, Rumiana Dimova^{1,*}

¹ Max Planck Institute of Colloids and Interfaces, 14776 Potsdam, Germany

² Departamento de Biofísica, Universidade Federal de São Paulo, São Paulo 04039-032, Brazil

[†] Authors with equal contribution

* Address correspondence to: kariske@unifesp.br and Rumiana.Dimova@mpikg.mpg.de

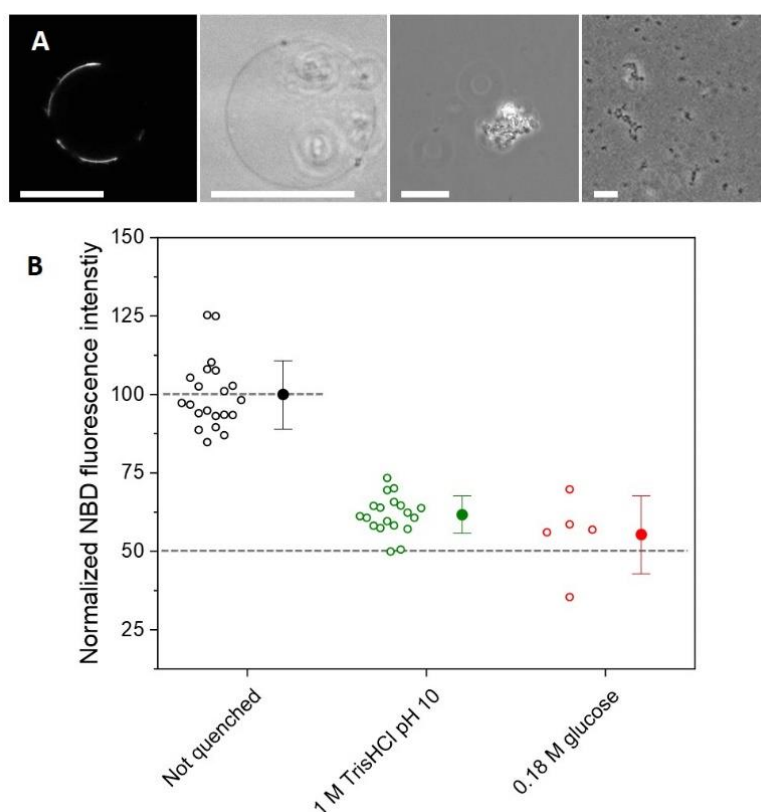


Figure S1: Non-buffered dithionite solutions affect GUV stability and do not allow for consistent quenching experiments. All experiments were conducted with symmetric and electroformed GUVs. (A) Examples of GUVs and lipid aggregates observed when diluting POPC GUVs (1 mol % NBD-PG) with 0.1 M $\text{Na}_2\text{S}_2\text{O}_4$ prepared in 0.18 M glucose to a final concentration of 2.5 mM $\text{Na}_2\text{S}_2\text{O}_4$. The first image was acquired with confocal and the others with phase contrast microscopy. The scalebars correspond to 25 μm . (B) Normalized fluorescence intensities before quenching (black circles) and in the presence of 2.5 mM $\text{Na}_2\text{S}_2\text{O}_4$ added from stock solutions of 0.1 M dithionite prepared in 1 M TrisHCl pH 10 (green circles) or in 0.18 M glucose (red circles). Each open symbol represents measurements on one vesicle and mean values with standard deviation are shown on the right. The dashed lines are guides to the eye and indicate the original vesicles intensity (unquenched) and half of this initial mean value. The scatter in the data is a result of the different vesicles sizes (i.e. equatorial sections located higher above the chamber bottom and deeper in the sample) and inhomogeneous distribution of the dye across vesicles. Therefore, the data should be interpreted with precaution and quantitate comparison should be considered only from samples quenched at the same conditions. Note that the data in Figure 2B for the case of the non-buffered conditions (0.18 M glucose) is scarce because of the small number and defective GUVs surviving the treatment.

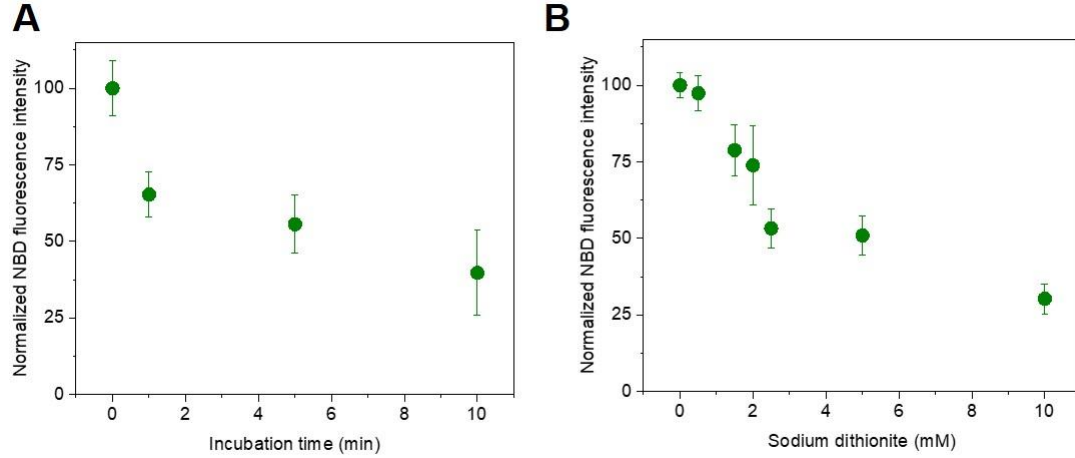


Figure S2. (A) Normalized fluorescence intensities before (not quenched, indicated as 0 incubation time) and after quenching with 2.5 mM $\text{Na}_2\text{S}_2\text{O}_4$ for different incubation times followed by 5-fold dilution – same data as in Figure 3C but with linear x-coordinate. (B) Normalized fluorescence intensities before (0) and after quenching of different sodium dithionite concentration for 5 minutes incubation time followed by 5-fold dilution – same data as in Figure 3D but with linear x-coordinate. All experiments were conducted with symmetric and electroformed GUVs.

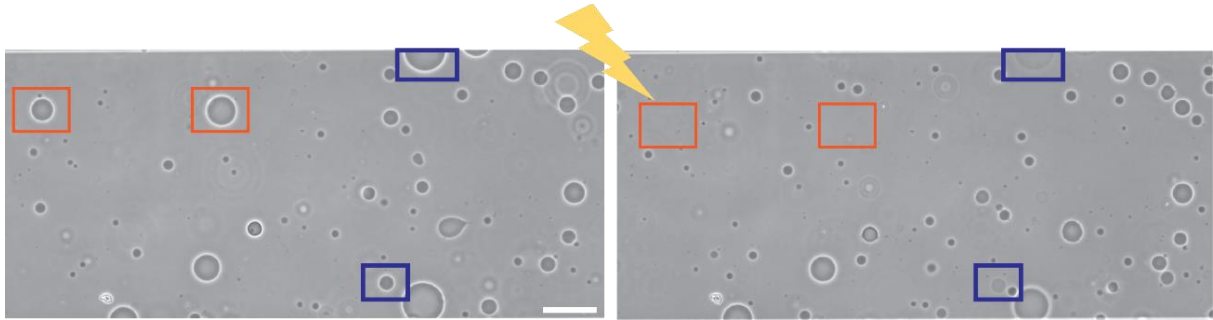


Figure S3. Quantifying the number of GUVs that undergo bursting or contrast loss. Phase contrast snapshots of a GUV sample in the electroporation chamber before (left) and after (right) pulse application and assessing the fraction of destabilized vesicles (X_{dest}). Upon poration, GUVs marked by orange rectangles burst (n_{burst}) and those marked by blue rectangles became leaky (n_{perm}). X_{dest} is calculated as $X_{dest} = (n_{burst} + n_{perm})/n_{GUVs}$, where n_{GUVs} is the total number of GUVs before pulse application. Scale bar: 100 μm . Sample: symmetric electroformed POPC:POPG (1:1) GUVs.

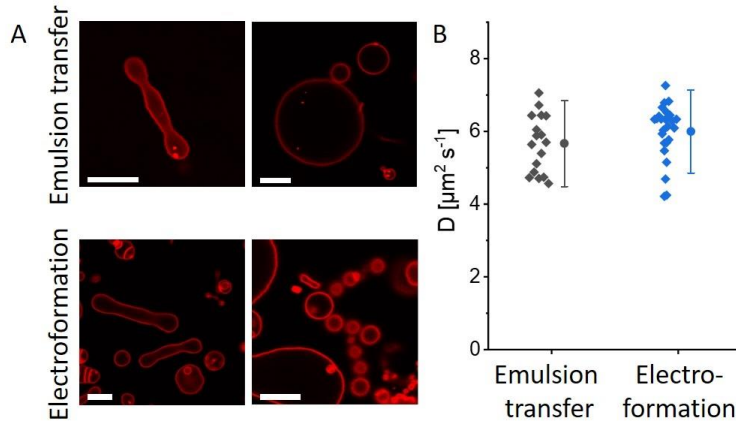


Figure S4. Membrane morphology and diffusivity in POPC GUVs prepared using the inverted emulsion protocol and electroformation. **A:** GUVs were deflated by addition of hypertonic glucose solution (1 M glucose). The inner sucrose solution had an osmolarity of 650 mOsmol and the osmolarity of the outer solution was increased to final 800 mOsmol. In both samples the deflation resulted in prolate or multisphere GUVs as expected for vesicles with sucrose/glucose asymmetry across the membrane^[1]. The scale bars correspond to 10 μm . **B:** Lipid diffusion coefficient (measured with TexasRed-DHPE) obtained from fluorescence recovery after photobleaching. The measured diffusion coefficients are not significantly different from each other. Data adapted from reference^[2] M. S. Stephan, V. Dunsing, S. Pramanik, S. Chiantia, S. Barbirz, T. Robinson, R. Dimova, Biomimetic asymmetric bacterial membranes incorporating lipopolysaccharides, *Biophys. J.* 2023, Copyright (2023), with permission from Elsevier.

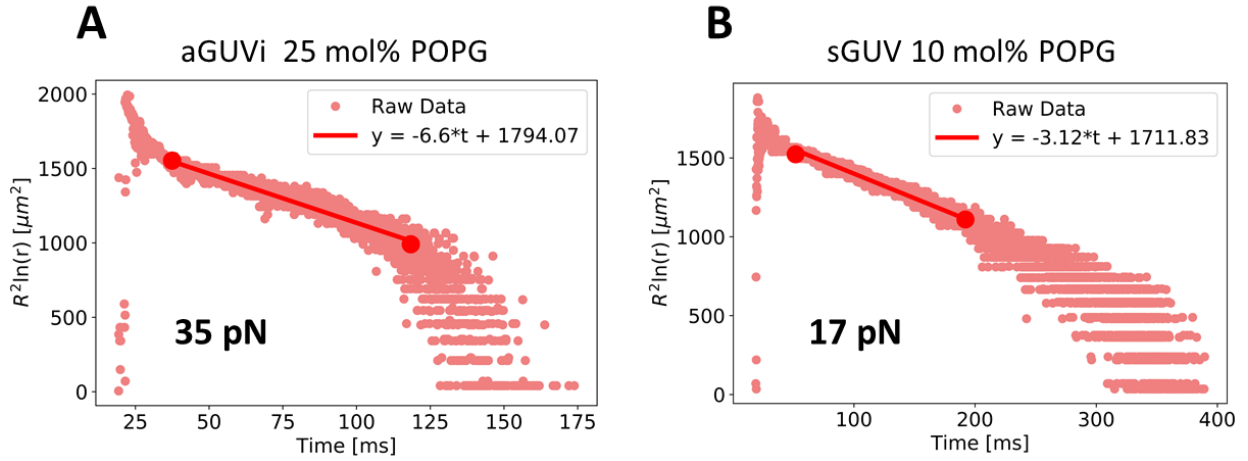


Figure S5. Example measurements of the pore edge tension. The vesicles are subjected to a porating pulse (3 kV/cm, 150 μs), see Materials and Methods section for details. The radius of a formed macropore, r , in a vesicle of radius, R , is detected using the home-developed software PoET^[3]. The pore dynamics follows four well-defined stages; (i) quick opening, (ii) maximum size stage, (iii) slow closure, limited by leak-out, and (iv) rapid closure. According to a theoretical model developed in^[4,5], the slow pore closure (third stage) can be directly related to the edge tension through $R^2 \ln(r) = -(2\gamma/3\pi\eta)t + C$, where η is the medium viscosity, t is time and C is a constant. The edge tension γ is directly calculated from the slope of the linear dependence of $R^2 \ln(r)$ with time. The two examples presented here correspond to pore edge tension measurements for (A) sGUV 10 mol% POPG and (B) aGUVi 25 mol% POPG. In the graphs, the pore size r in μm is rescaled by $l = 1 \mu\text{m}$ to avoid taking the logarithm of dimensional value. The respective edge tension values obtained from the slopes of the fits (red solid lines) are 35 pN and 17 pN.

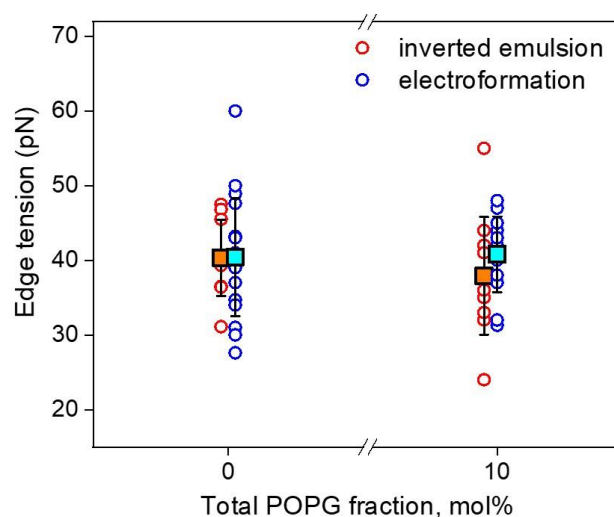


Figure S6. Comparison of pore edge tension values for POPC and POPC with 10 mol% POPG GUVs prepared via inverted emulsion (red circles) and electroformation (blue circles). Each point represents a measurement on one single vesicle and squares show the mean values with standard deviation. A total of 54 vesicles were measured, 12 to 18 vesicles per membrane composition.

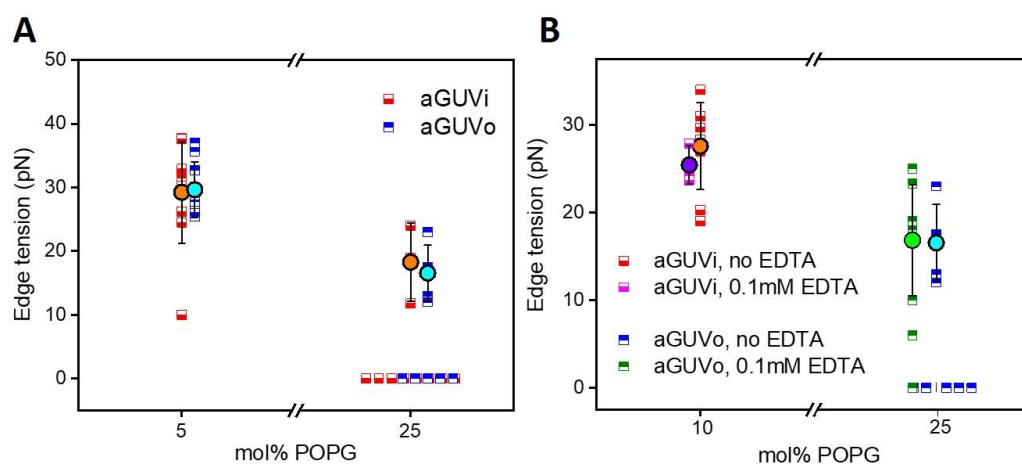


Figure S7. Location of charge in asymmetric membranes in GUVs prepared via the inverted emulsion technique and presence of EDTA does not influence edge tension values. (A) Asymmetric GUVs containing 5 and 25 mol% POPG in the outer leaflet (aGUVo) and in the inner leaflet (aGUVi). (B) Asymmetric GUVs containing 10 and 25 mol% PG in aGUVi and aGUVo in the absence and in the presence of 0.1 mM EDTA. Each half-filled square represents a measurement on one vesicle, mean and standard deviation are shown in circles. Data showing zero edge tension values correspond to GUVs which have burst.

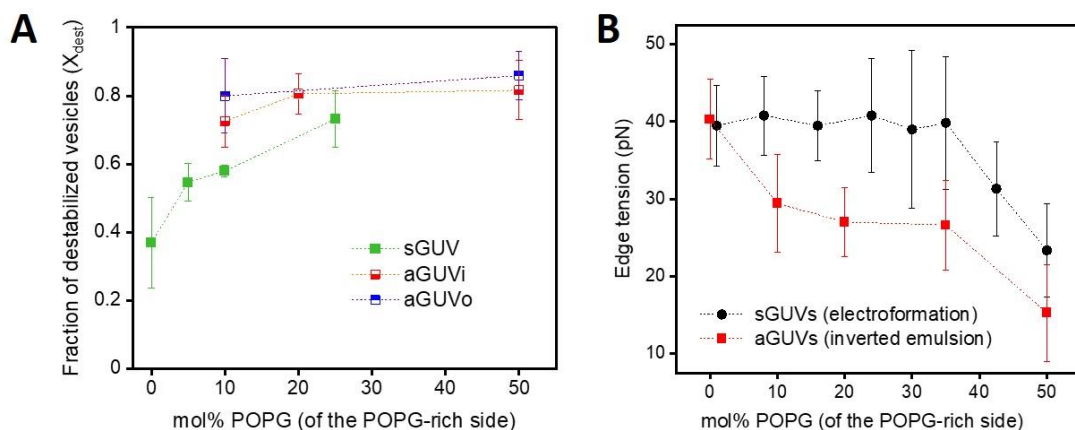


Figure S8. Comparison of the (A) fraction of destabilized vesicles and (B) pore edge tension mean values for sGUVs and aGUVs as a function of the molar fraction of POPG in the POPG-rich leaflet. In (A) the sGUVs were also obtained by the inverted emulsion protocol whereas in (B) the sGUVs were grown by electroformation and the data were taken from Lira et al. ^[6].

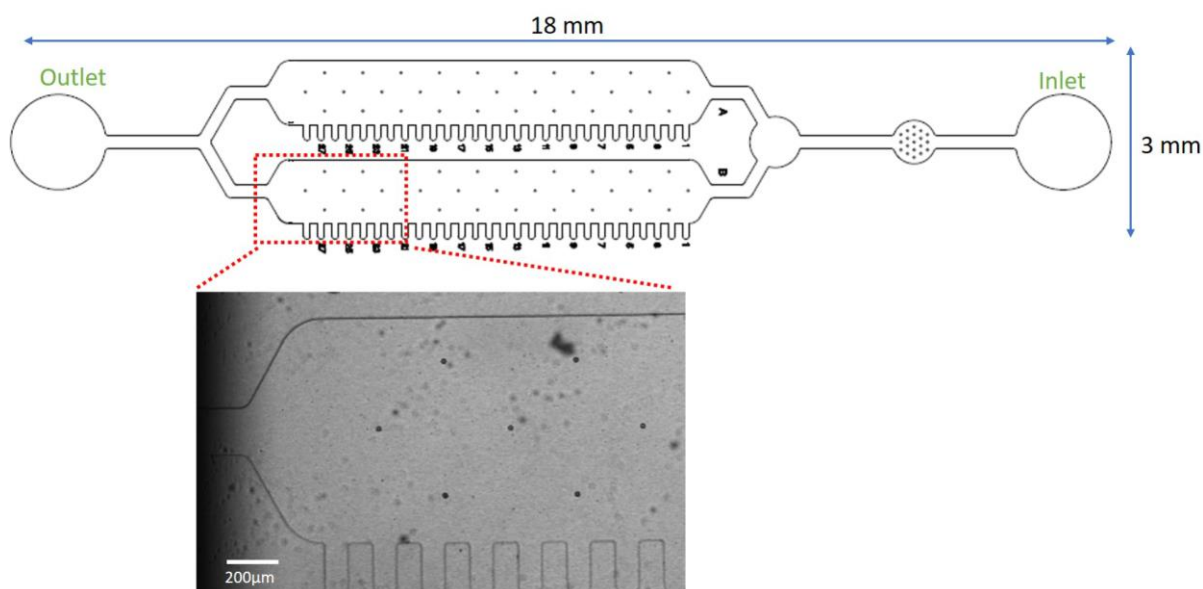


Figure S9. Design of the microfluidic chip (full view shown in the lower right corner) with dead-end channels for trapping GUVs and solution exchange^[7]. The bright field image at the bottom show a portion of the chip with the side channels.

Movie captions

Movie S1. Vesicle composed of POPC:POPG in the molar ratio of 8:2 and containing 1 mol% NBD-PG was electroformed on ITO glasses in the presence of 200 mM sucrose solution at pH 7. The vesicle was trapped in the microfluidic device and the outer solution was exchanged with an isotonic mixture of glucose and sucrose (in the ratio of 9:1) at pH 7 before starting the recording. During the course of the movie, the outer solution was exchanged with isotonic glucose/sucrose (in the ratio of 9:1) solution at pH 3, resulting in the tubes in the inside of the GUV. The diameter of the GUV was 32 μm. The time stamp corresponds to min:sec.

Movie S2. Vesicle composed of POPC:POPG in the molar ratio of 8:2 and containing 1 mol% NBD-PG was electroformed on ITO glasses in the presence of 200 mM sucrose solution at pH 7. The vesicle was trapped in the microfluidic device and the outer solution was exchanged with an isotonic mixture of glucose

and sucrose (in the ratio of 9:1) at pH 3 before starting the recording. During the course of the movie, the outer solution was exchanged with an isotonic glucose/sucrose (in the ratio of 9:1) solution at pH 7, resulting in the tubes being pulled out of the GUV and resulting in outward buds and protrusions. The diameter of the GUV was 20 μm . The time stamp corresponds to min:sec.

References

- [1] T. Bhatia, S. Christ, J. Steinkühler, R. Dimova, R. Lipowsky, *Soft Matter* **2020**, *16*, 1246.
- [2] M. S. Stephan, V. Dunsing, S. Pramanik, S. Chiantia, S. Barbirz, T. Robinson, R. Dimova, *Biophys. J.* **2023**, DOI 10.1016/j.bpj.2022.12.017.
- [3] F. S. C. Leomil, M. Zoccoler, R. Dimova, K. A. Riske, *Bioinforma. Adv.* **2021**, *1*, DOI 10.1093/bioadv/vbab037.
- [4] F. Brochard-Wyart, P. G. de Gennes, O. Sandre, *Phys. A Stat. Mech. its Appl.* **2000**, *278*, 32.
- [5] R. Ryham, I. Berezovik, F. S. Cohen, *Biophys. J.* **2011**, *101*, 2929.
- [6] R. B. Lira, F. S. C. Leomil, R. J. Melo, K. A. Riske, R. Dimova, *Adv. Sci.* **2021**, *8*, 2004068.
- [7] S. Pramanik, J. Steinkühler, R. Dimova, J. Spatz, R. Lipowsky, *Soft Matter* **2022**, *18*, 6372.